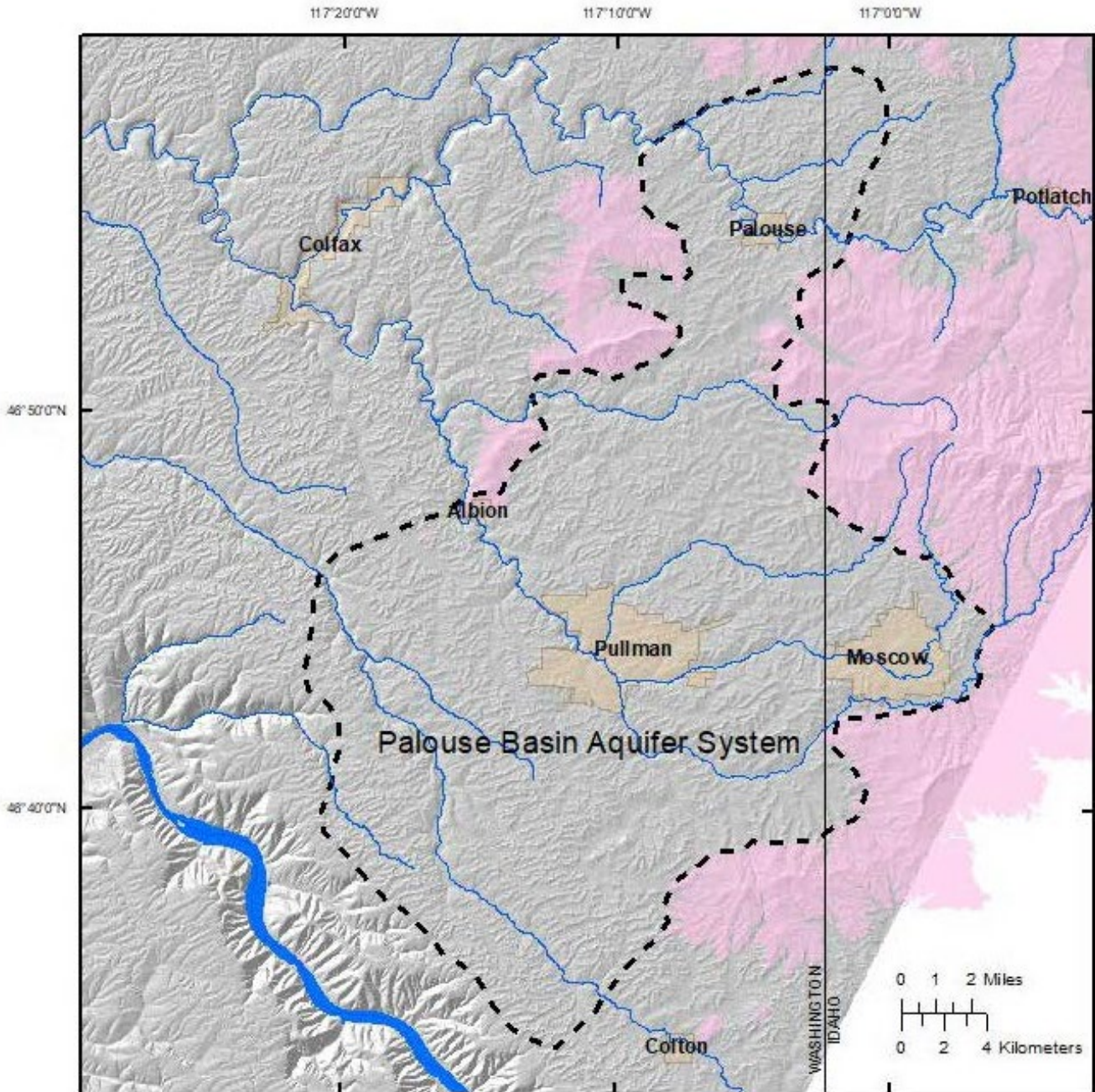


PALOUSE BASIN AQUIFER SYSTEM

(Bush, Robischon, Dunlap 2022)



Physiographic map showing revised extent of the Palouse Basin aquifer system (inside black dashed line); Columbia River Basalt Group (gray), pre-Columbia River Basalt Group basement rocks (pink).

PALOUSE BASIN
AQUIFER
committee