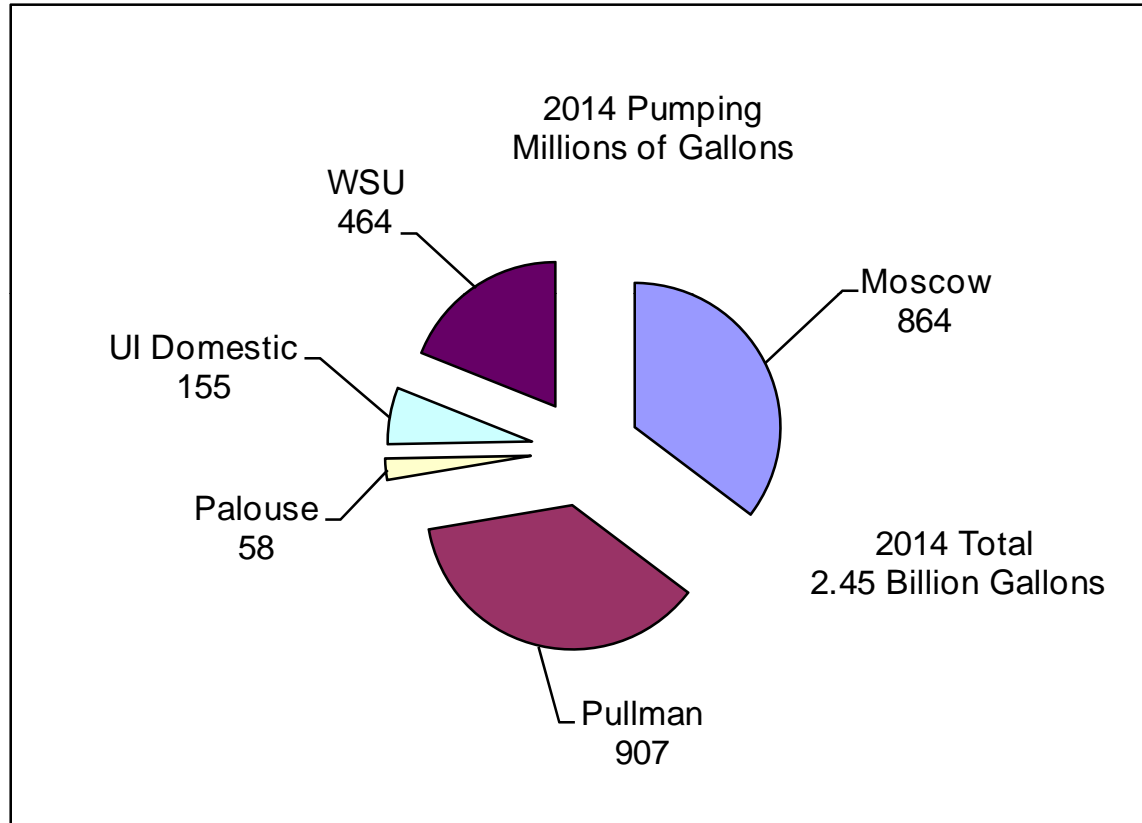


2014 Water Use and Weather

January 26, 2015

2014 Pumping

Total Pumping = 2.45 Billion Gallons

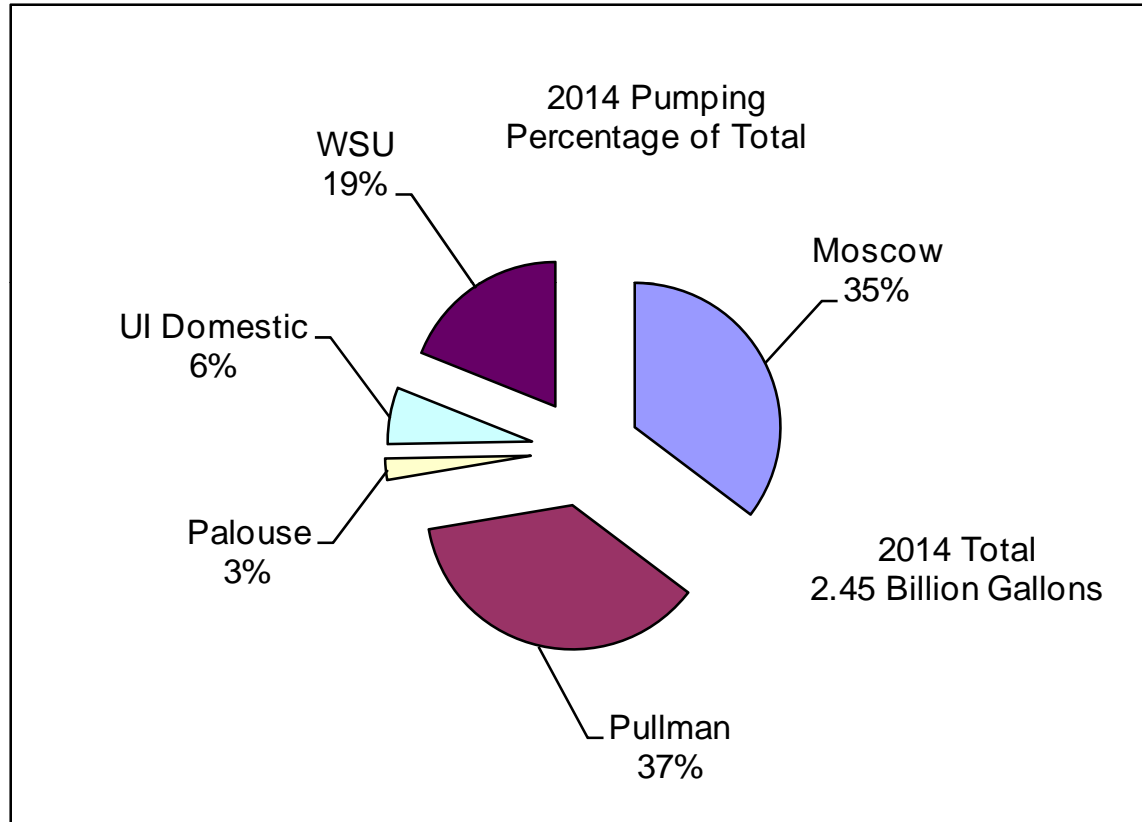


1% over 2013

11% under 1992

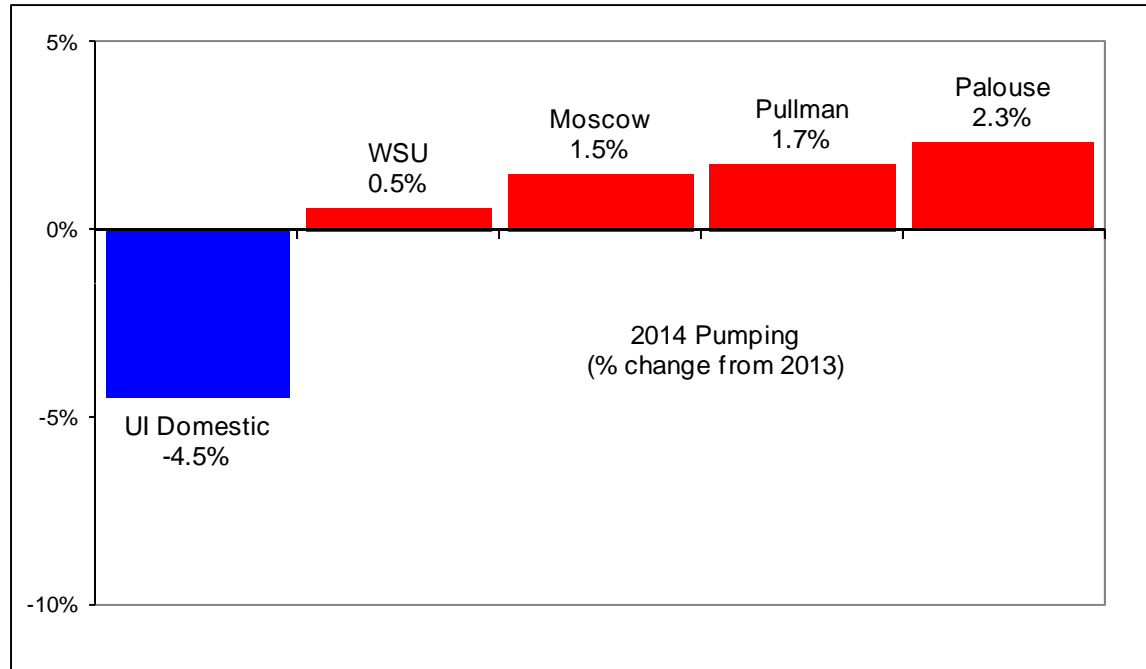
2014 Pumping

Percentage of Total by Entity



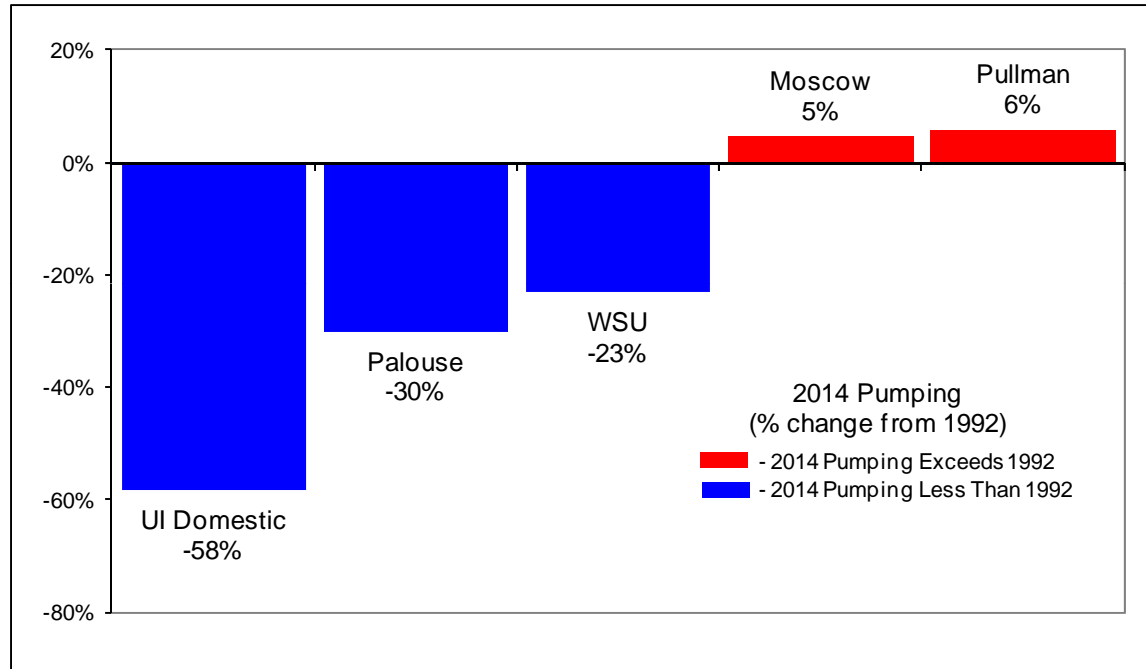
2014 Pumping

Percentage Change from 2013



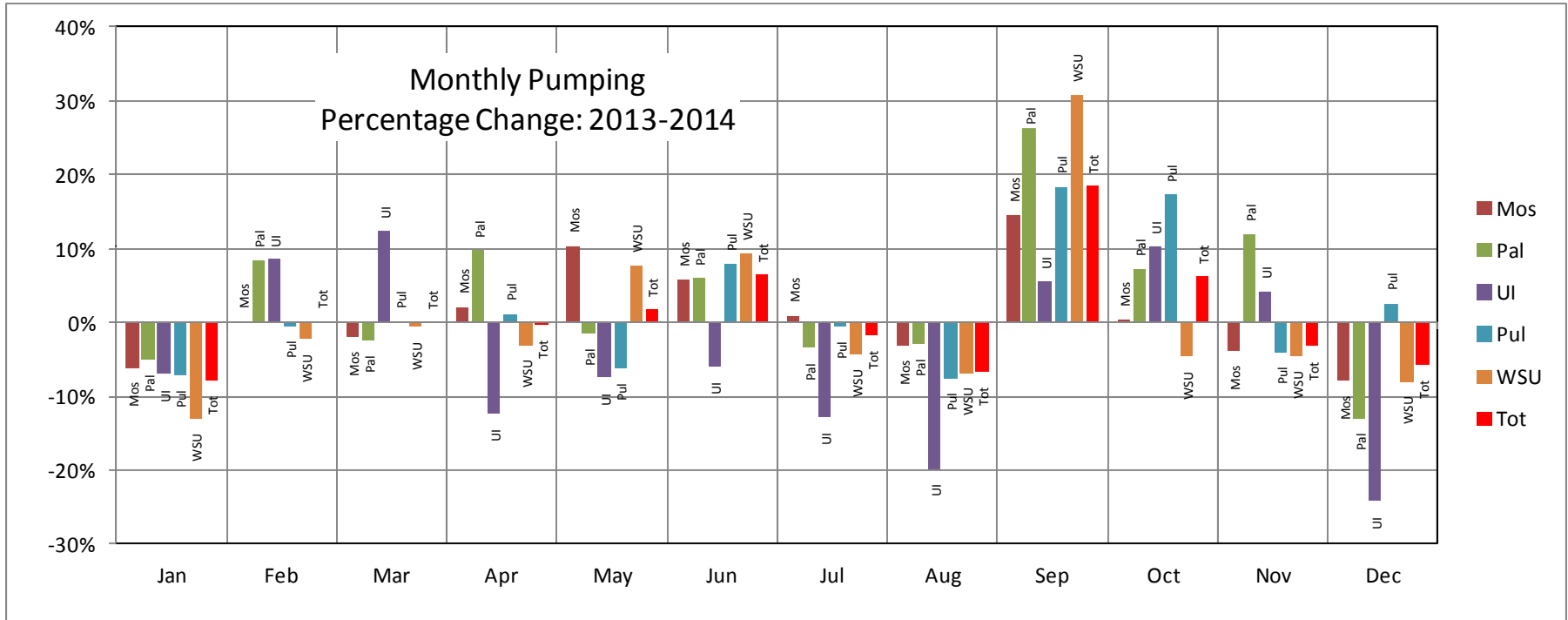
2014 Pumping

Percentage Change from 1992



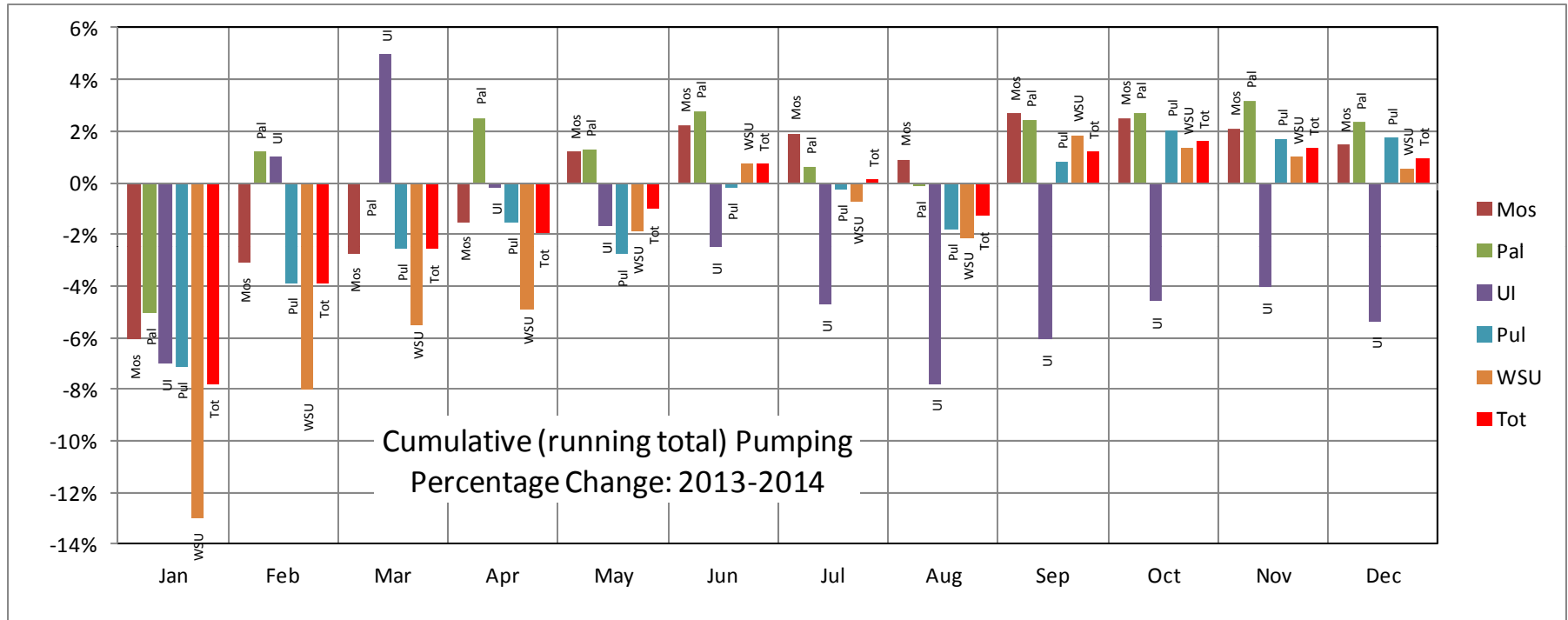
2014 Pumping

Percentage Change from 2013 By Month



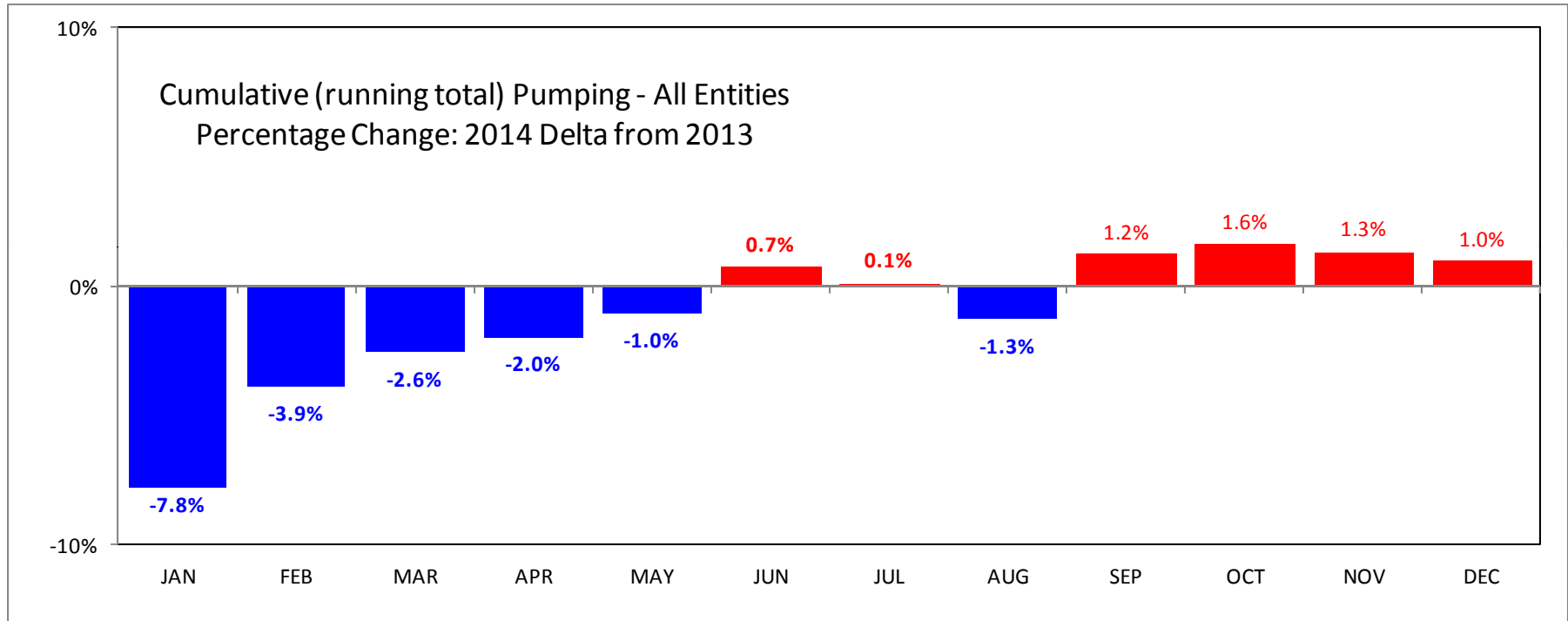
2014 Pumping

Cumulative % Change from 2013 By Month

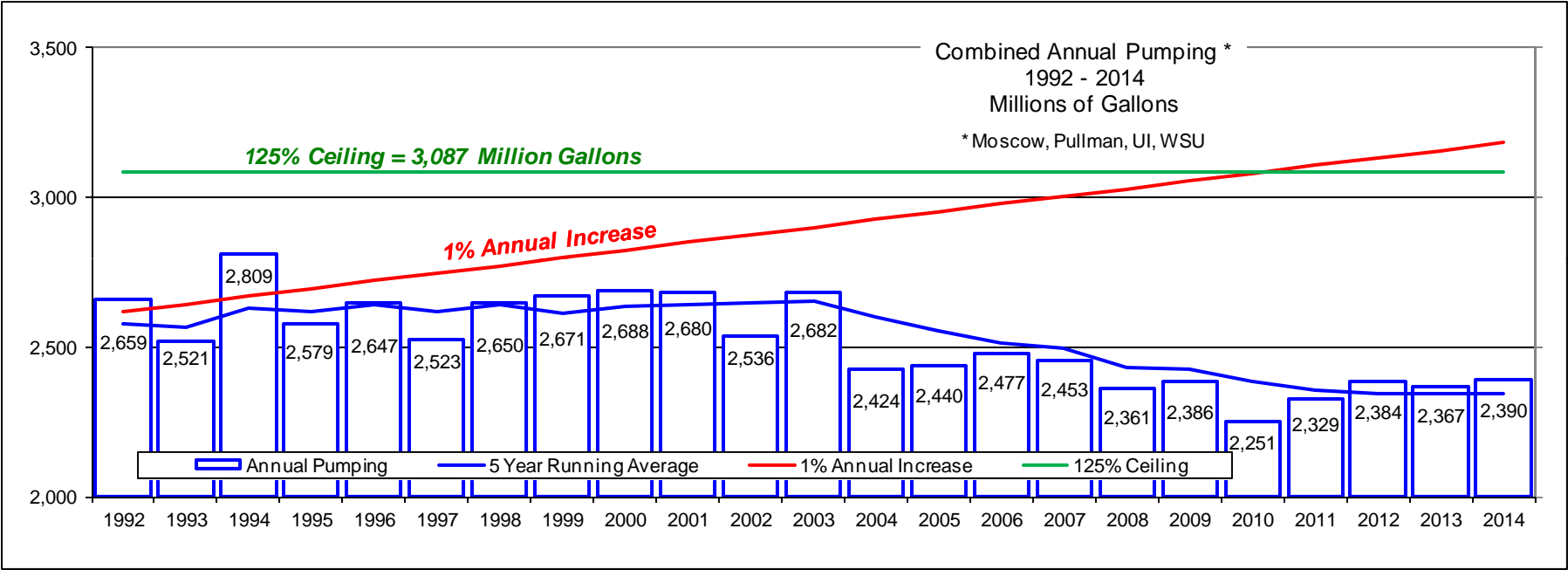


2014 Pumping

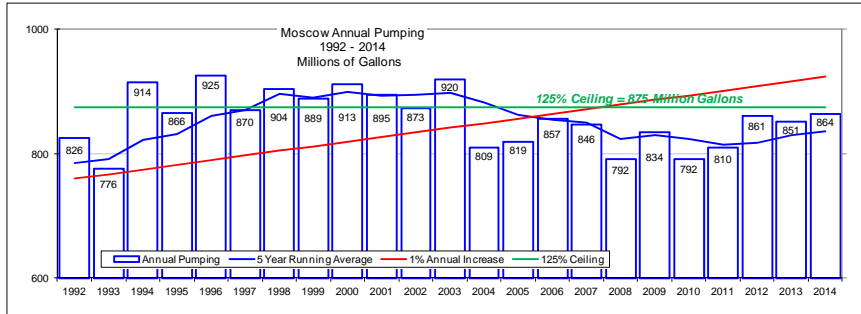
Cumulative % Change from 2013 By Month



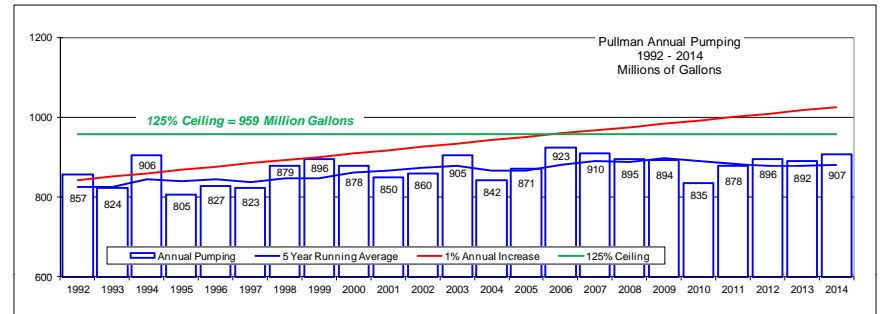
2014 Pumping Combined Pumping Targets



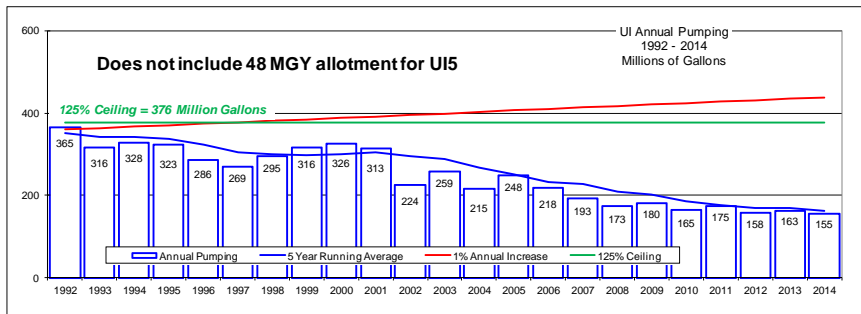
2014 Pumping Entity Pumping Targets



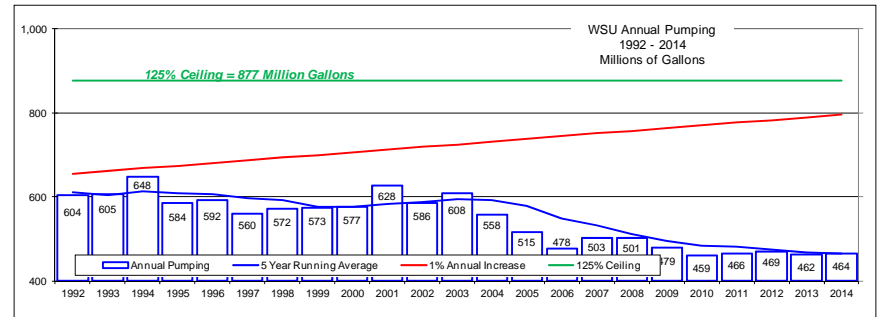
Moscow



Pullman



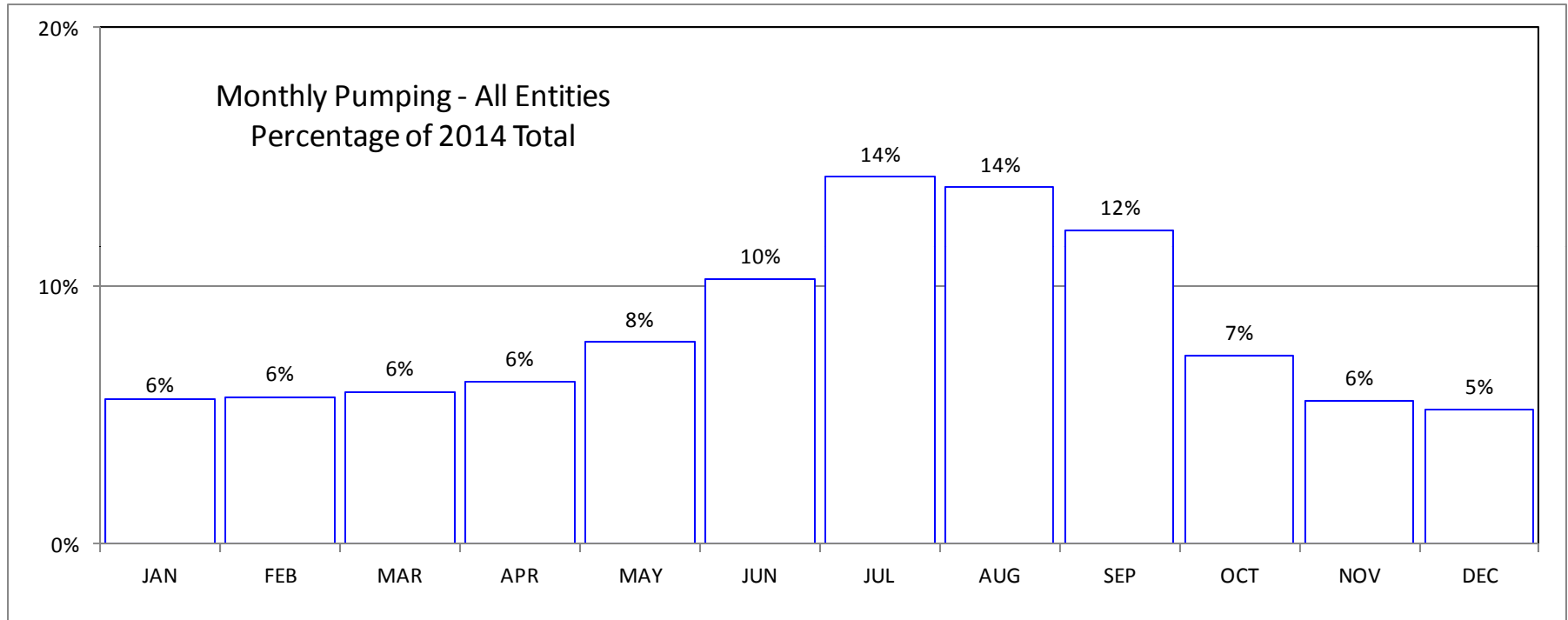
UI



WSU

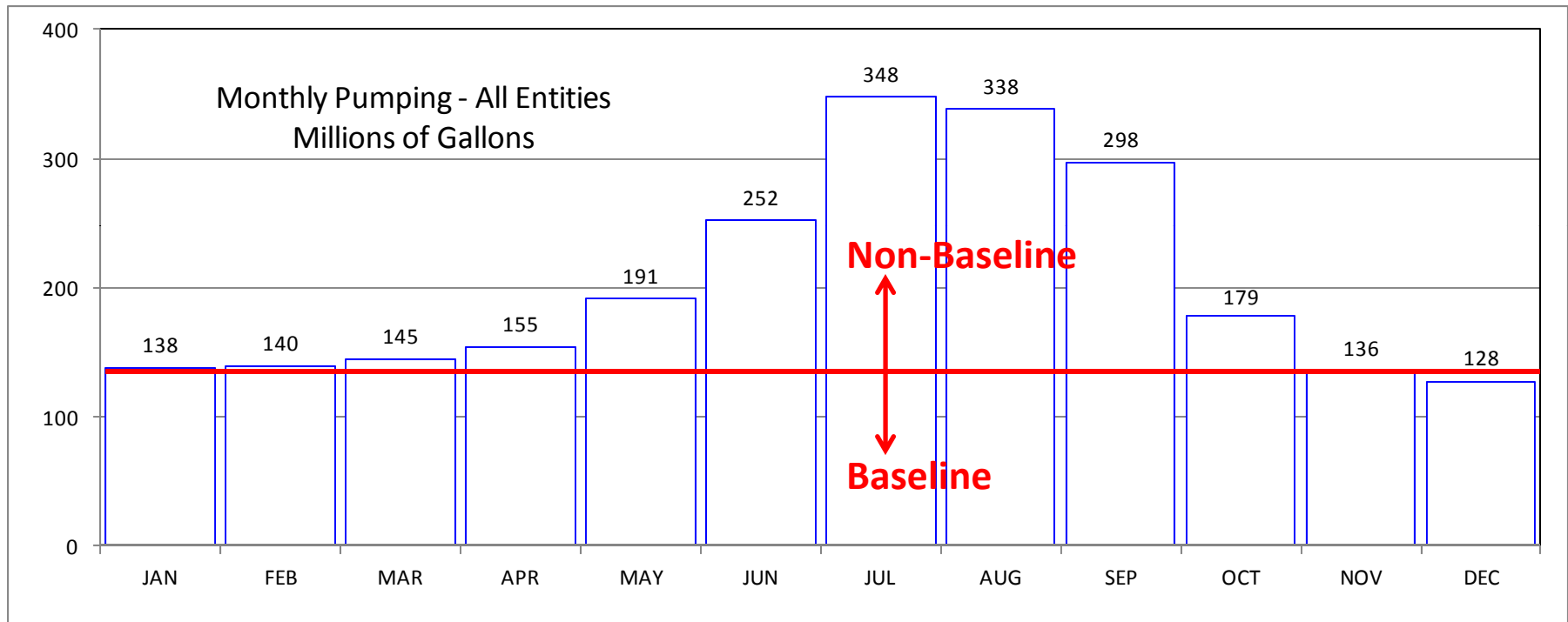
2014 Pumping

Percentage of Total by Month (All Entities)

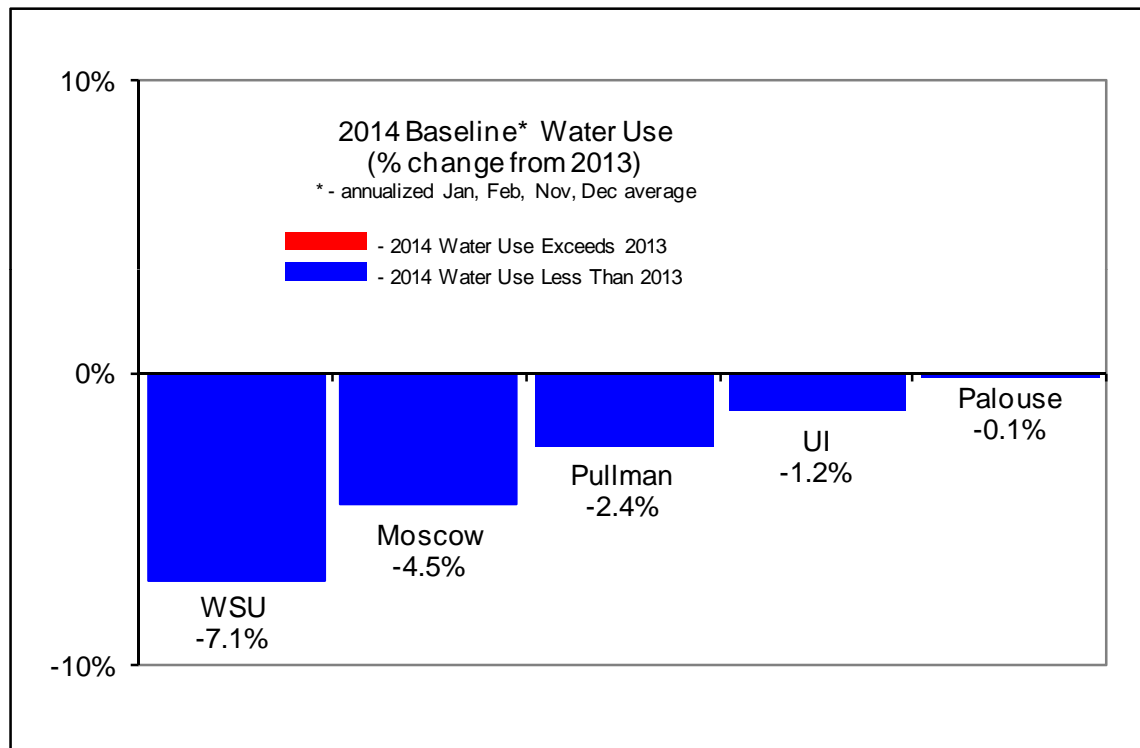


2014 Pumping

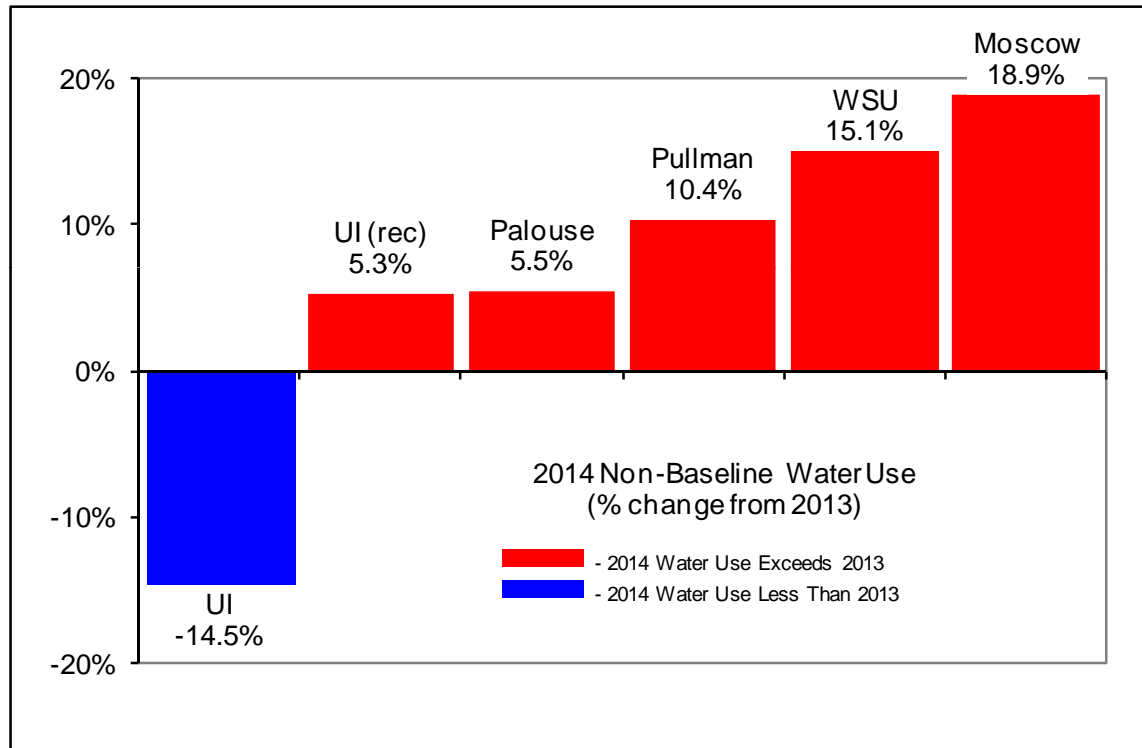
Monthly Pumping – All Entities



Baseline (\approx indoor) Pumping Percentage Change 2013 - 2014

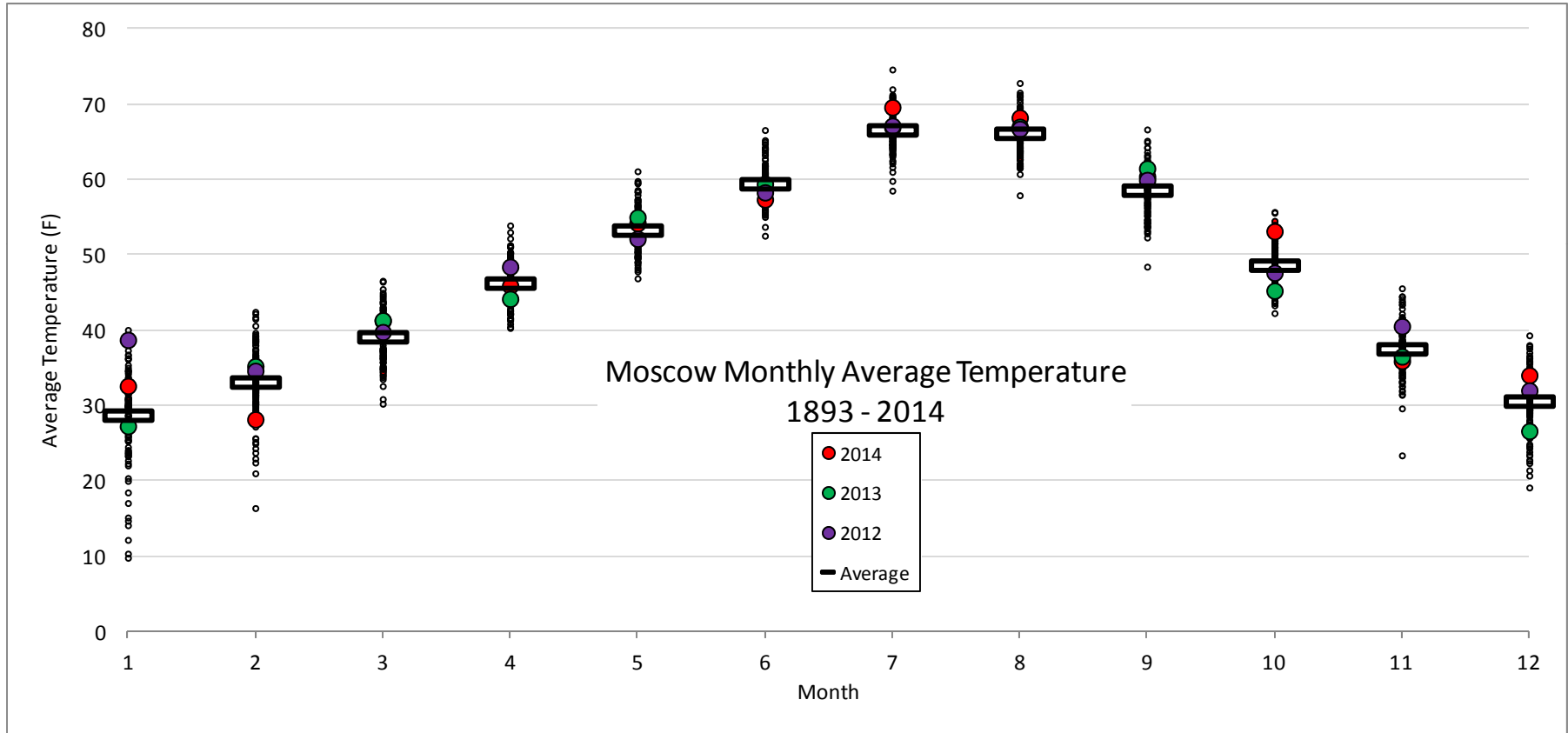


Non-Baseline (\approx outdoor) Pumping Percentage Change 2013 - 2014



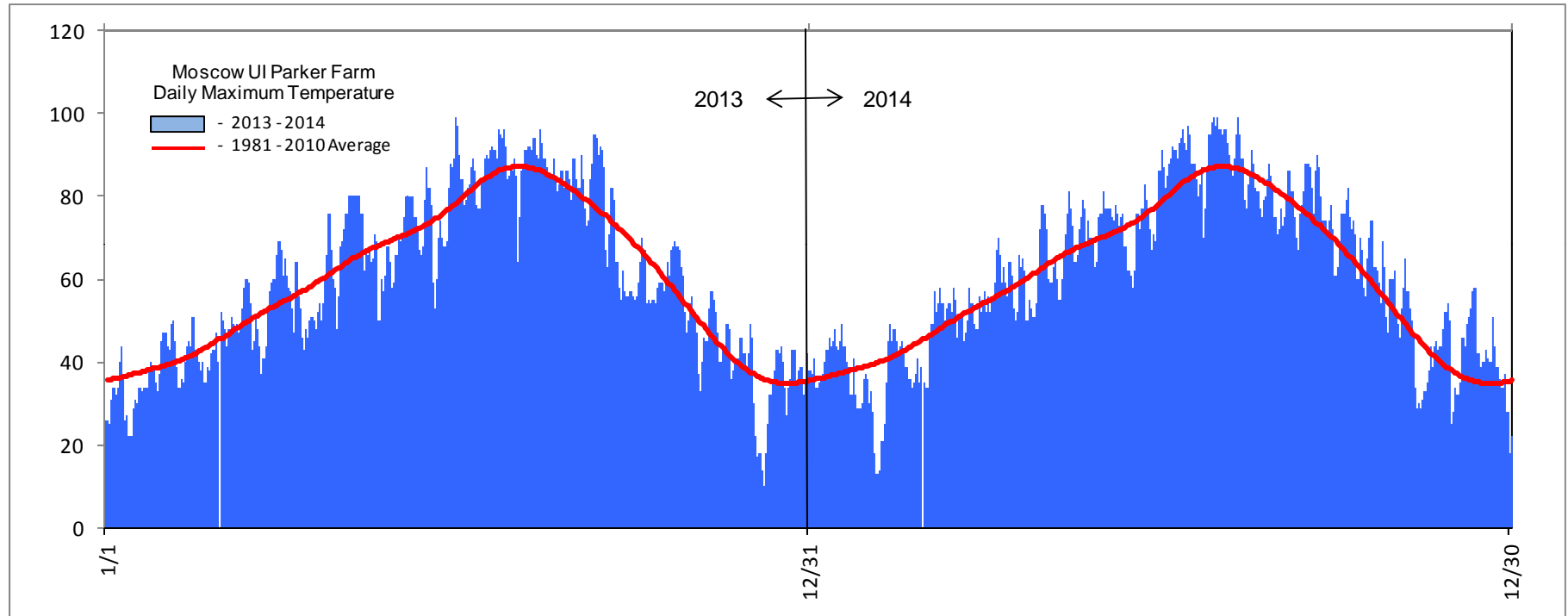
2014 Weather

Average Temperature

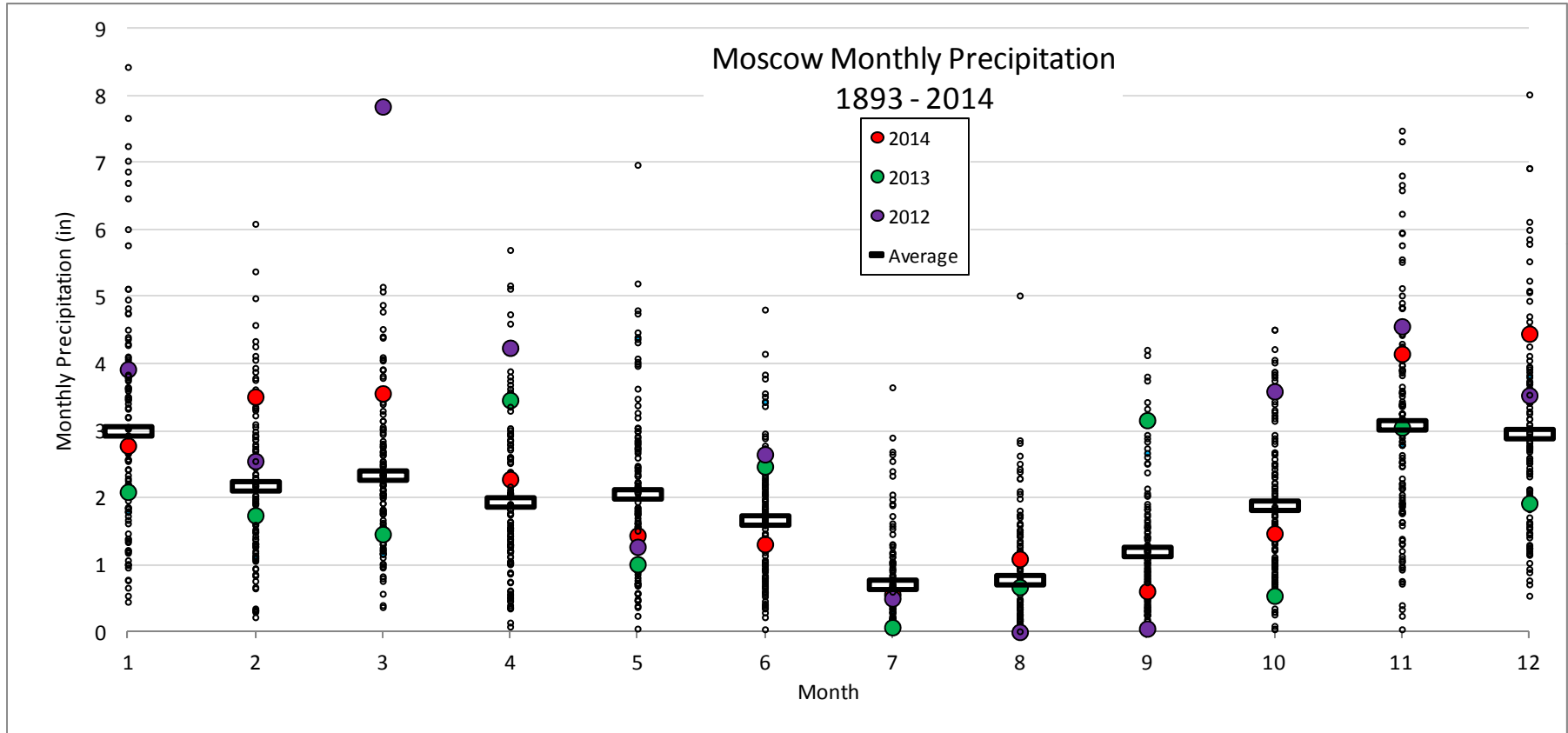


2013 - 2014 Weather

Daily Max. Temperature compared to 30 yr Average

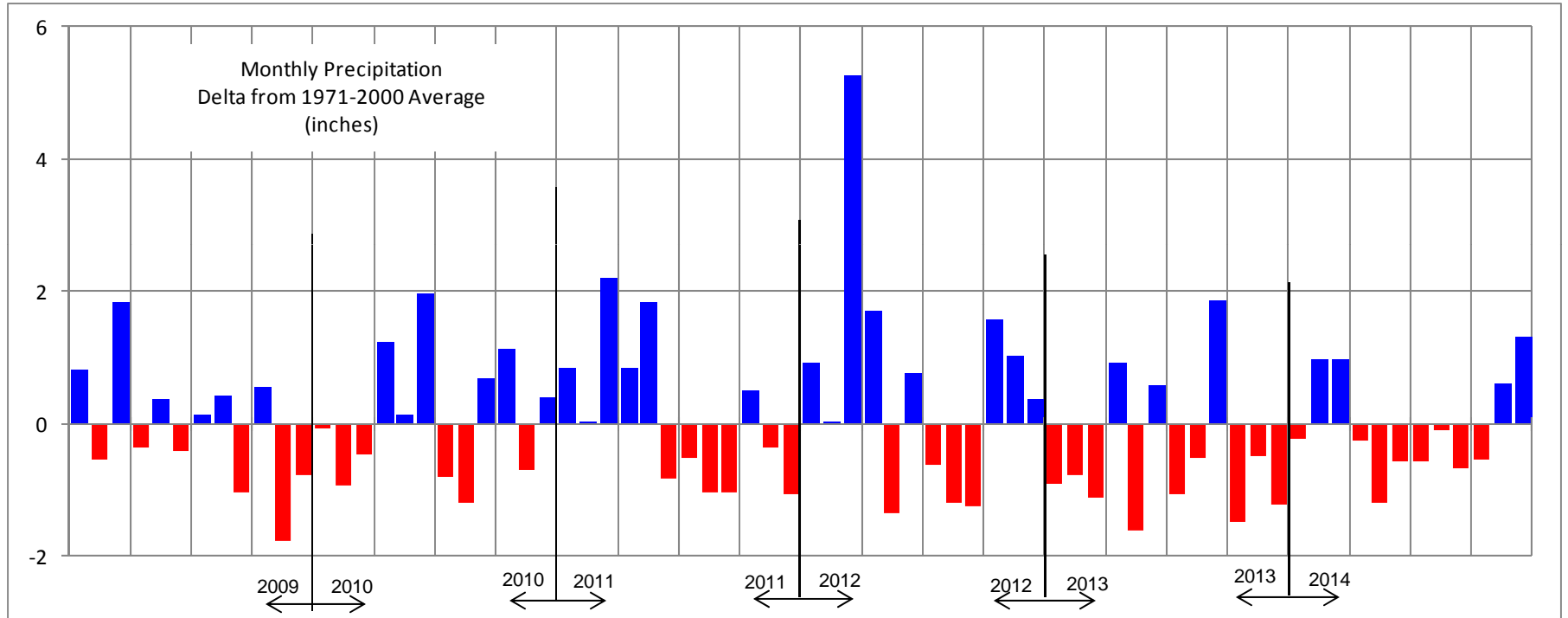


2014 Weather Precipitation



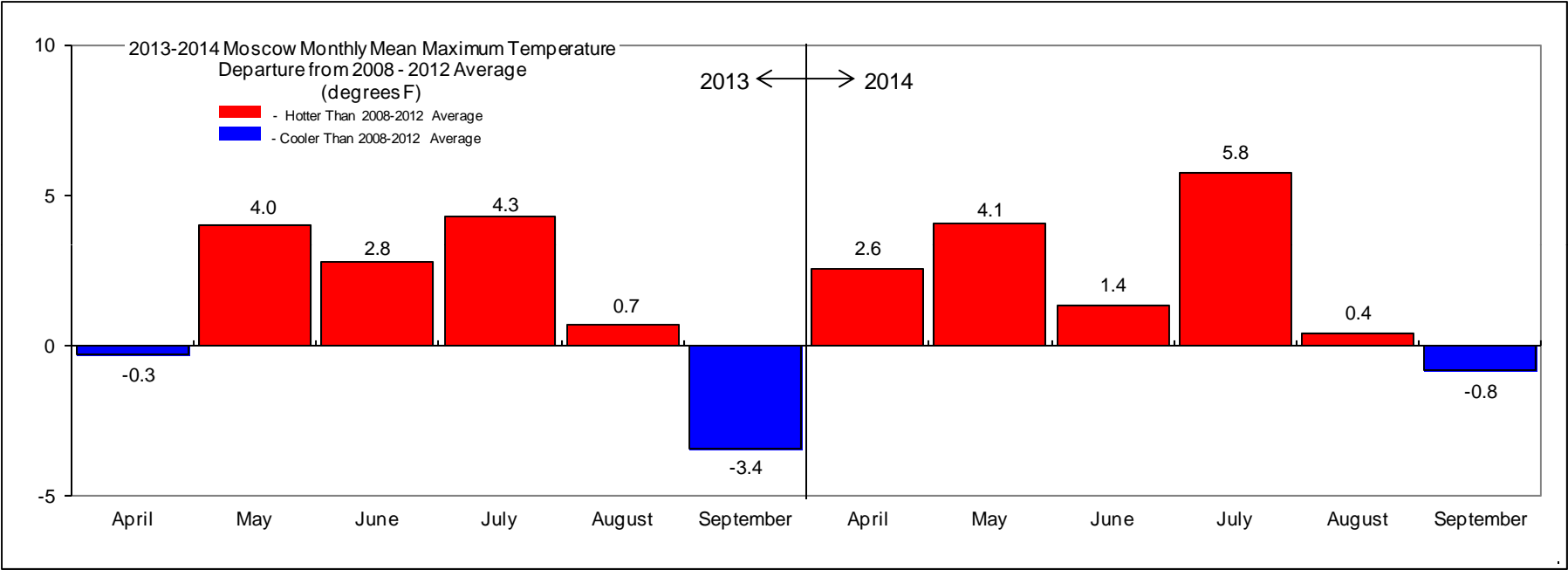
2009 - 2014 Weather

Precipitation compared to 30 yr Average

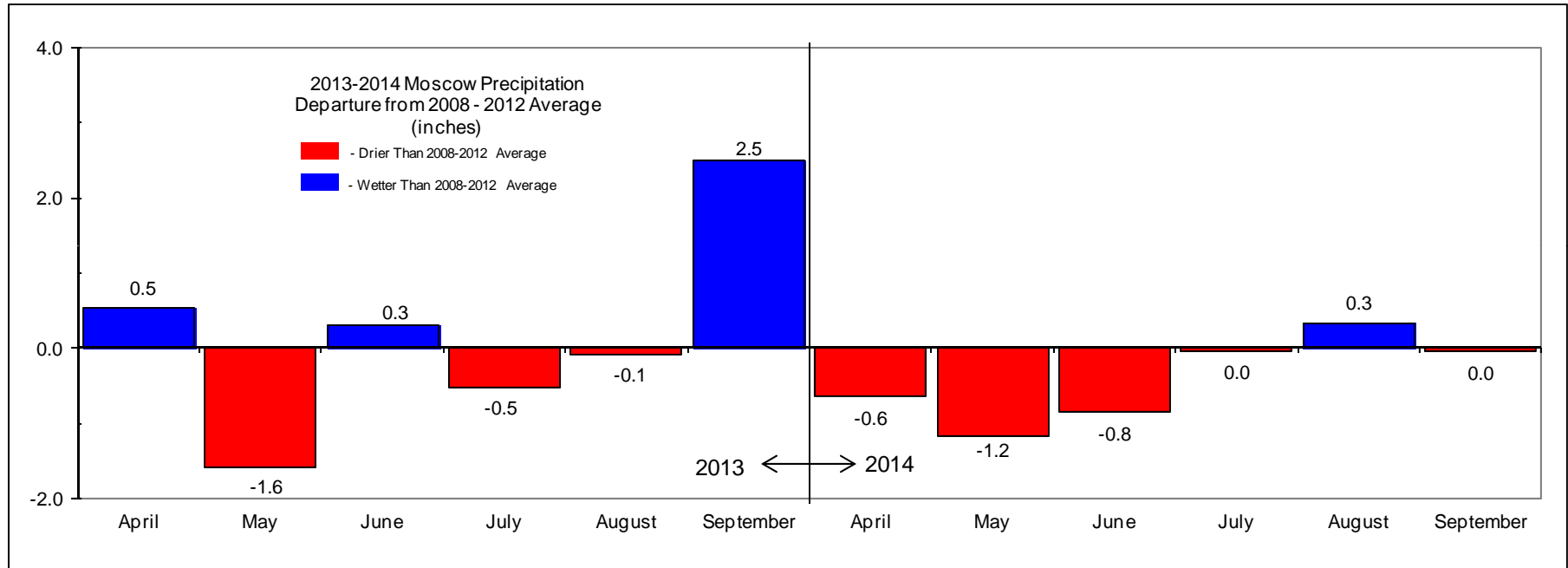


2013 - 2014 Irrigation Season Weather

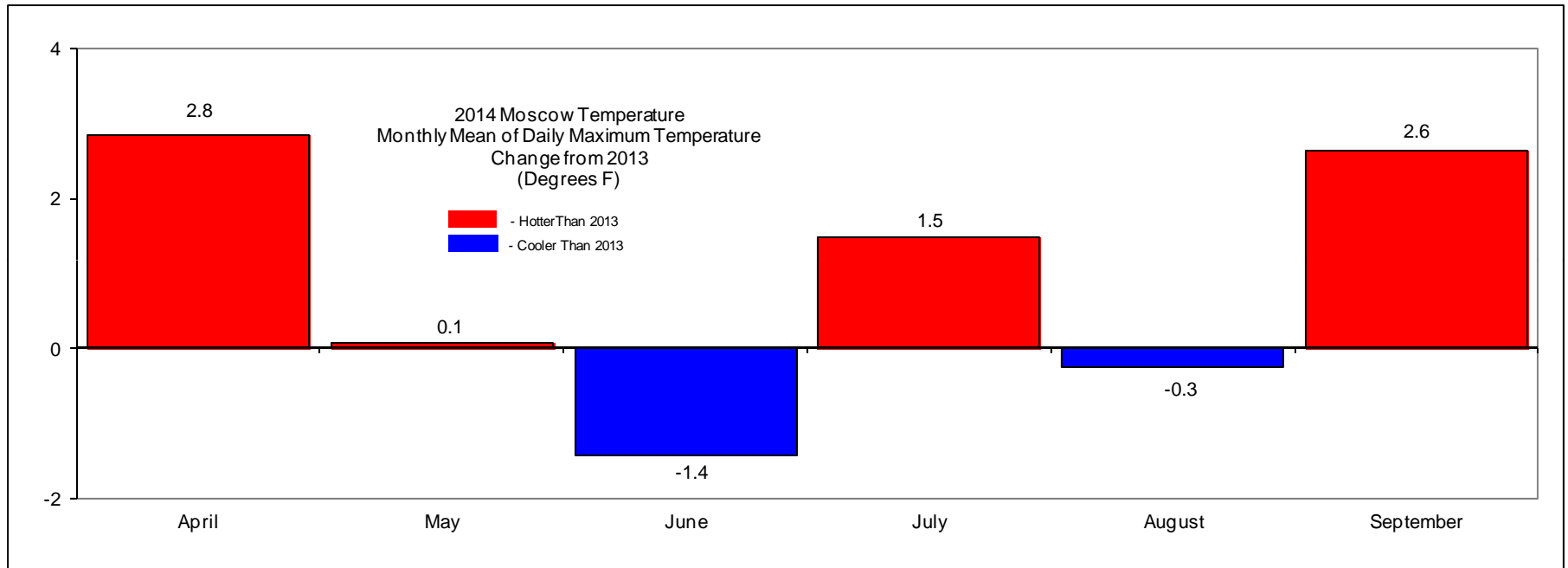
Temperature compared to 5 yr Average



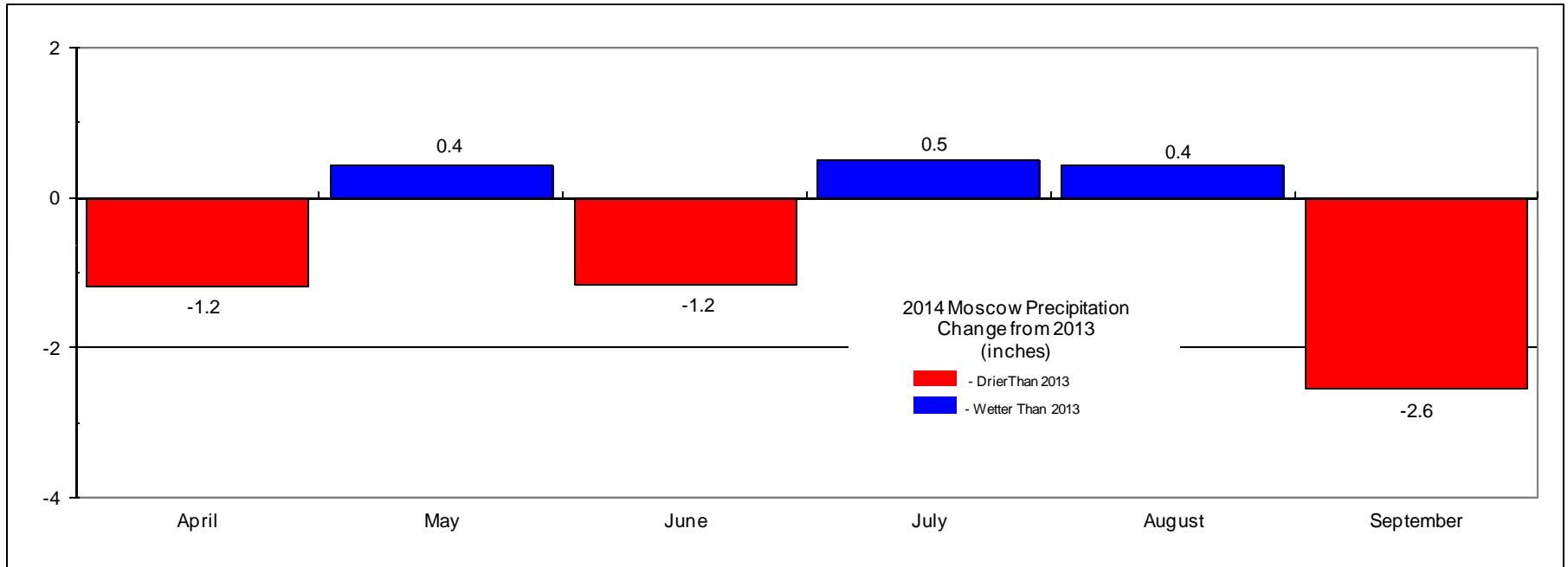
2013 - 2014 Irrigation Season Weather Precipitation compared to 5 yr Average



2014 Irrigation Season Weather Temperature Change from 2013



2014 Irrigation Season Weather Precipitation Change from 2013



2014 Irrigation Season Weather

Pan Evaporation Change from 2013

