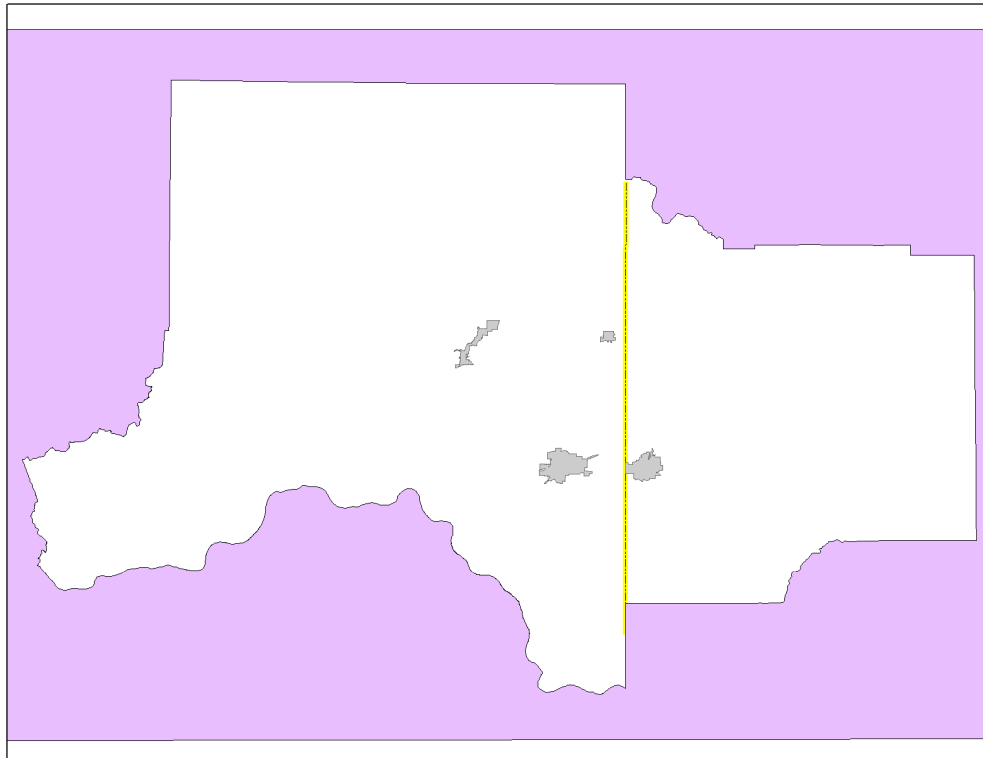


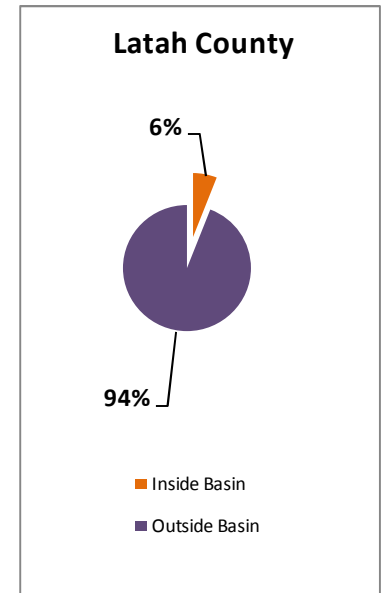
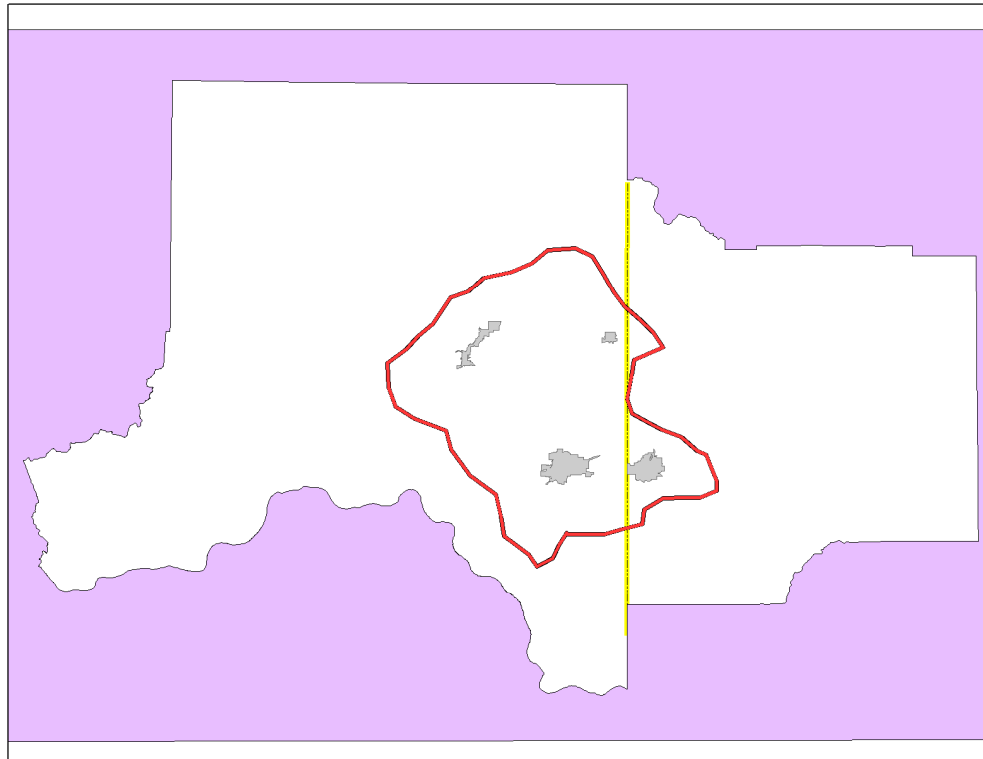
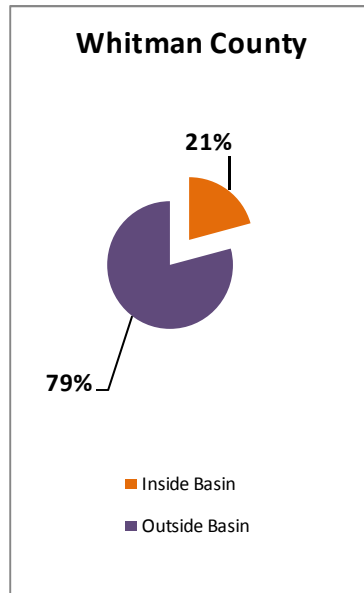
2010 Census and Water Use
PBAC Meeting
April 21, 2011

Population Change: 2000 - 2010

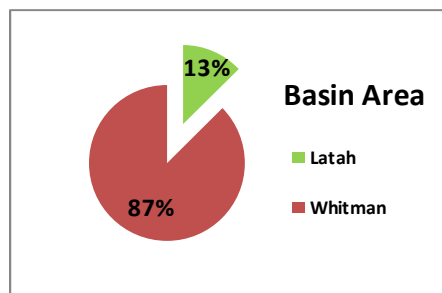


	2010 Pop	2000 Pop	Change
Whitman County	44,776	40,740	4,036
Latah County	37,244	34,935	2,309
Pullman	29,799	24,675	5,124
Moscow	23,800	21,291	2,509
Colfax	2,805	2,844	-39
Palouse	998	1,011	-13

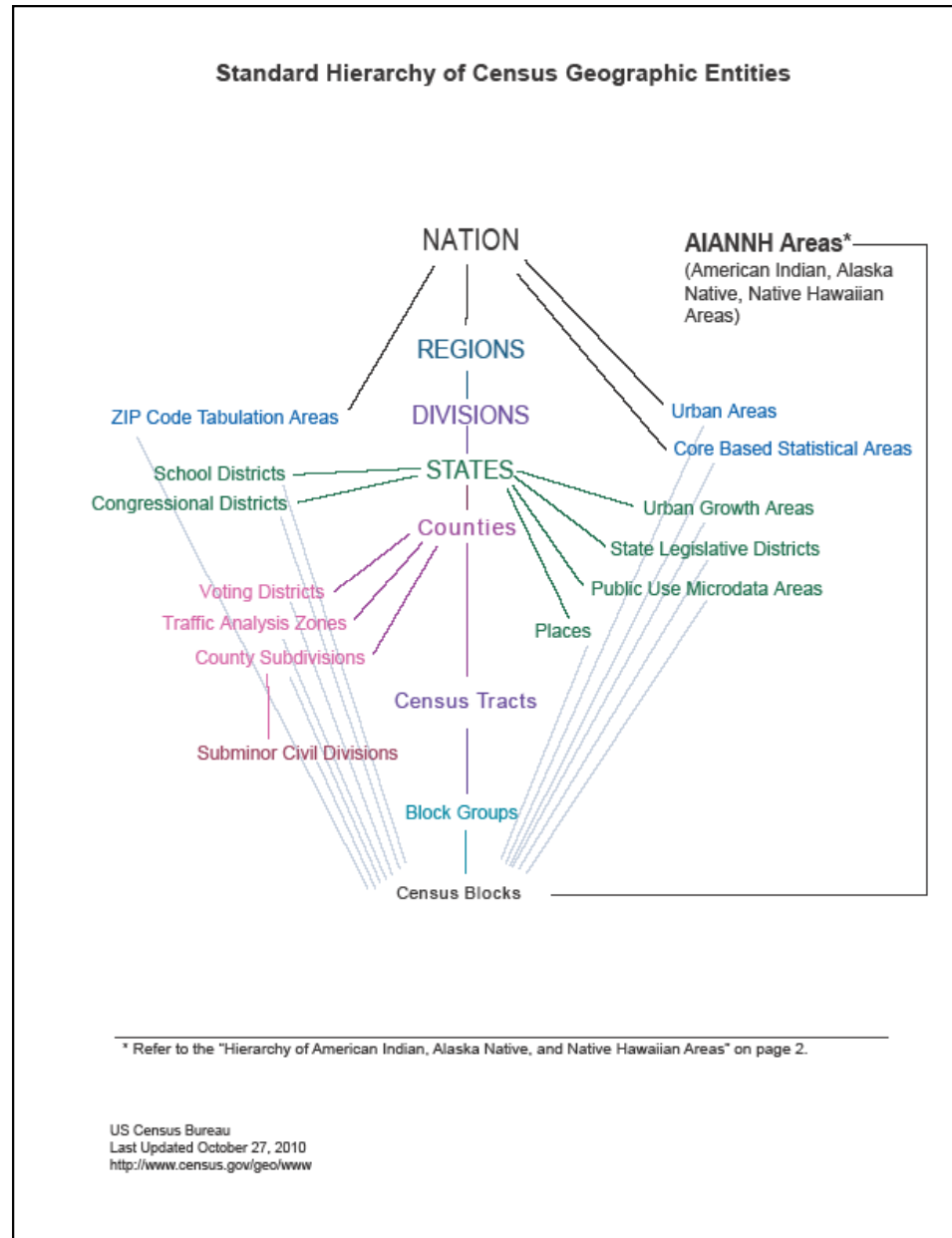
2010 Palouse Basin Areal Breakdown



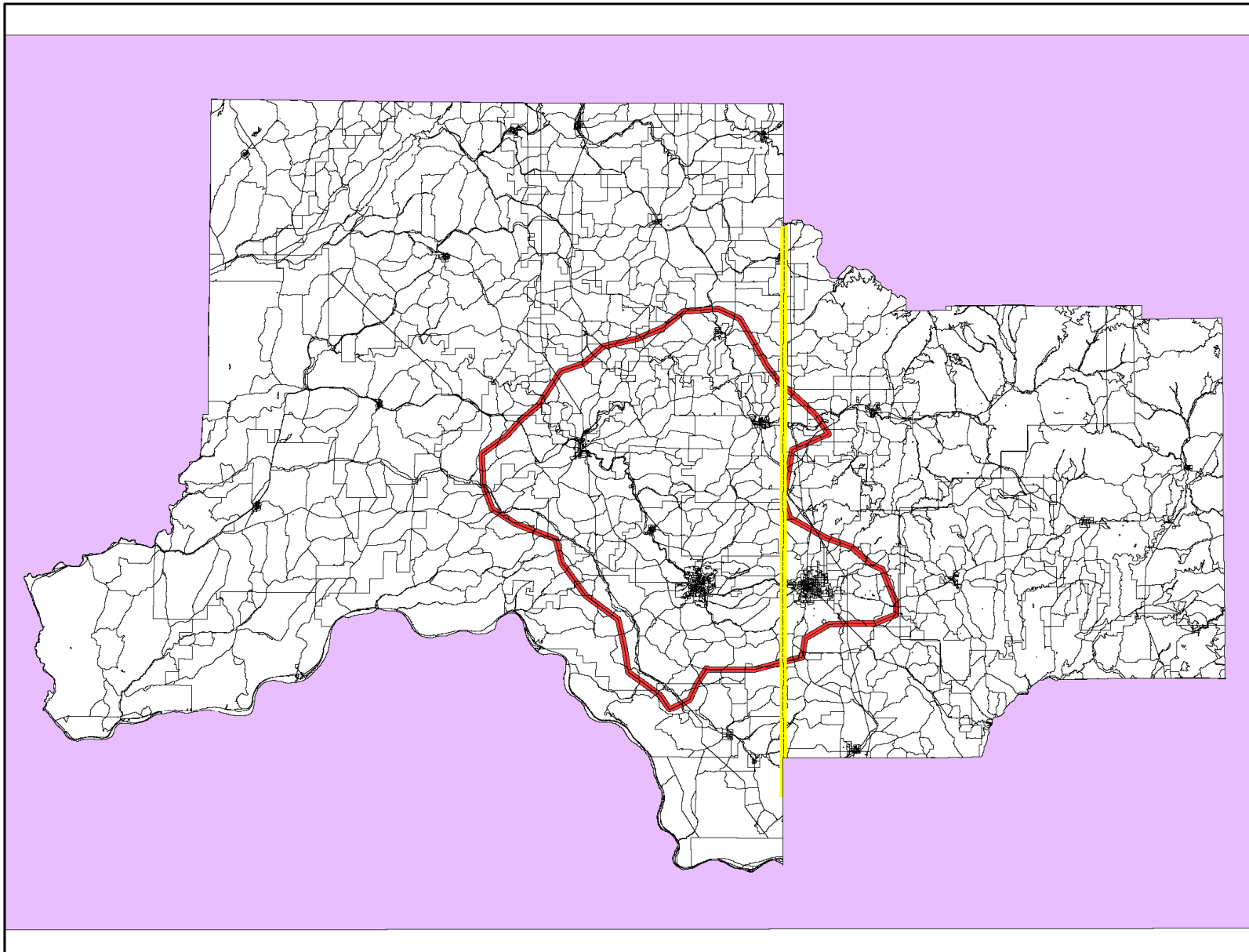
	Area (sq. mi.)				
	Total	Within Basin	% Inside	Outside Basin	% Outside
Basin	518	N/A	N/A	N/A	N/A
Latah	1,076	65	6%	1,011	94%
Whitman	2,176	452	21%	1,724	79%



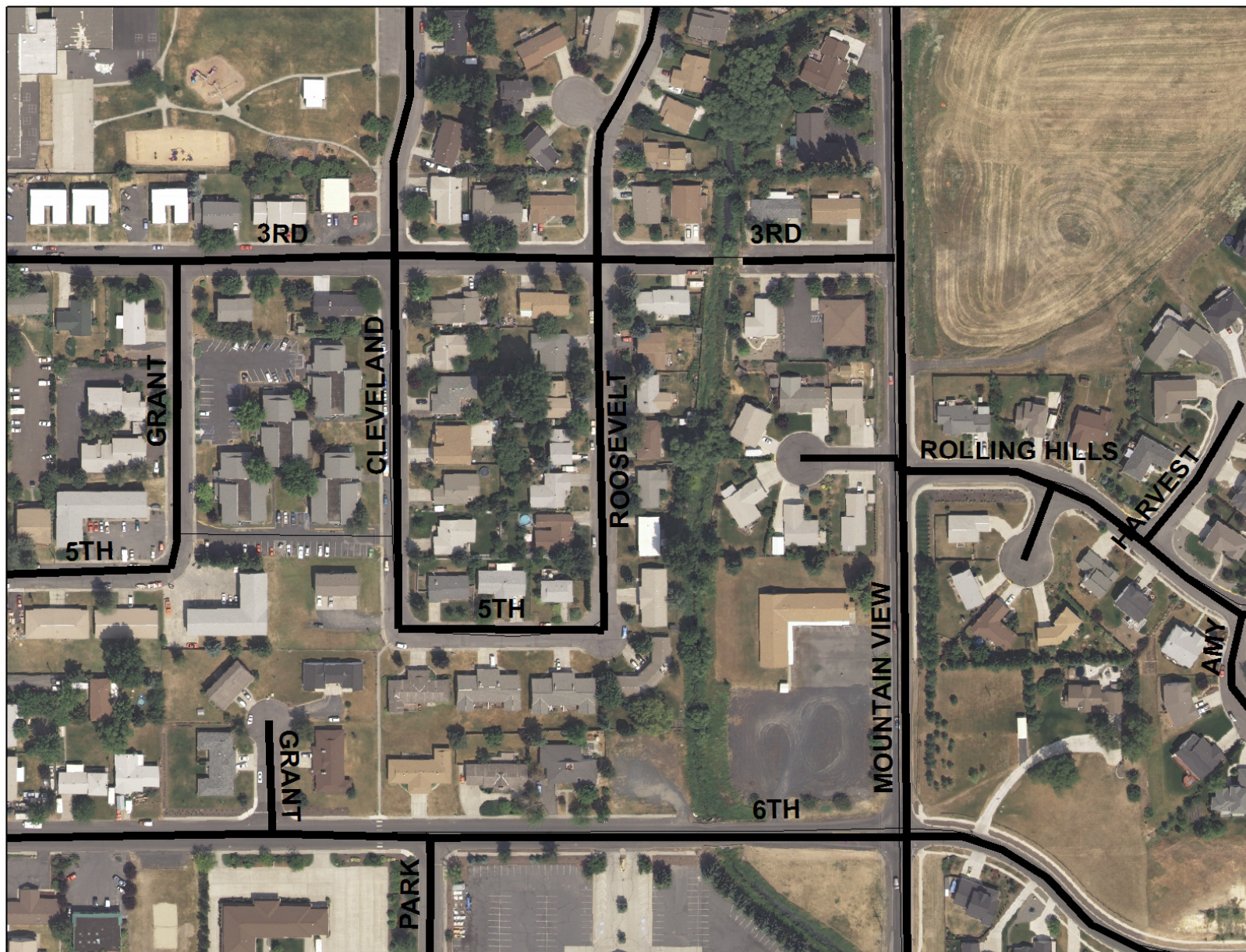
Census Geographic Hierarchy



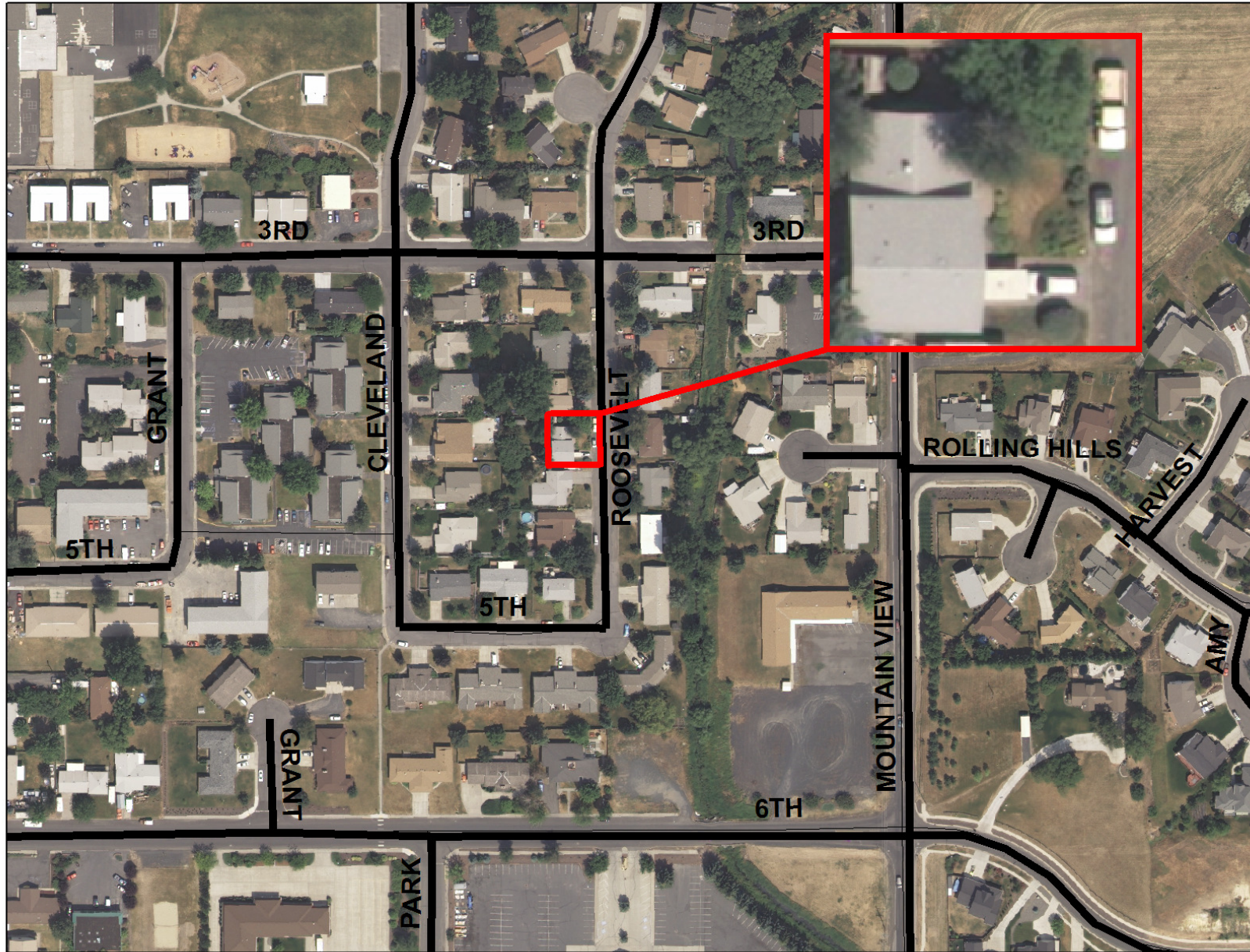
2010 Census Blocks



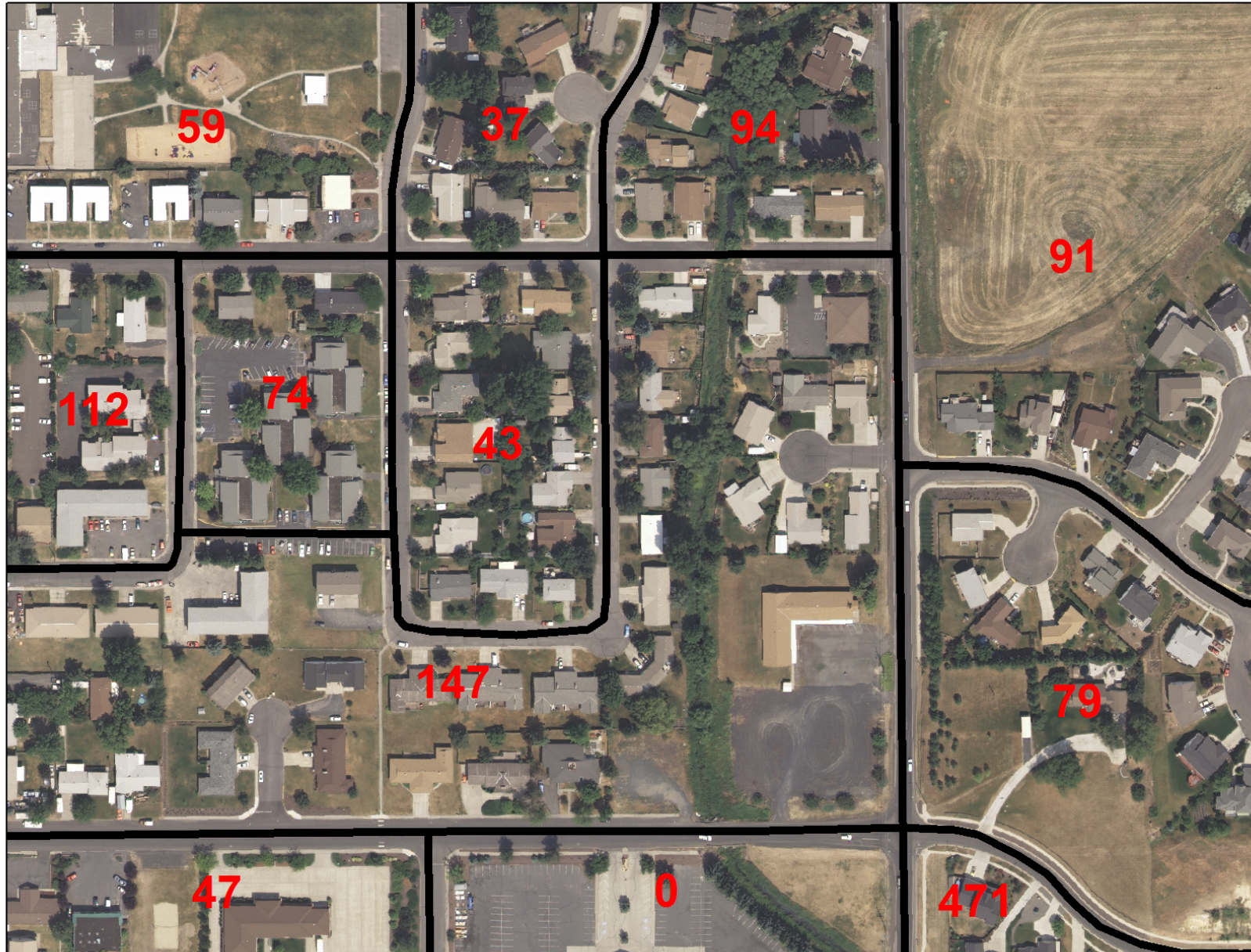
2010 Census Block Example



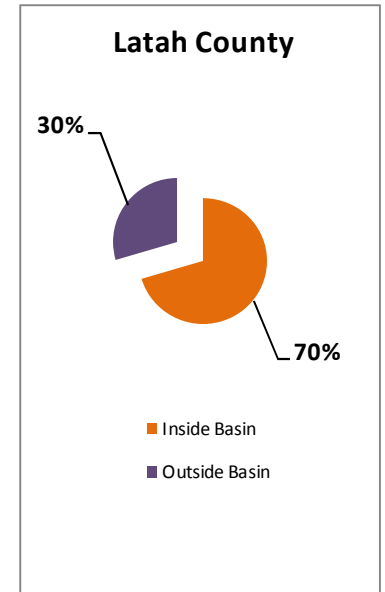
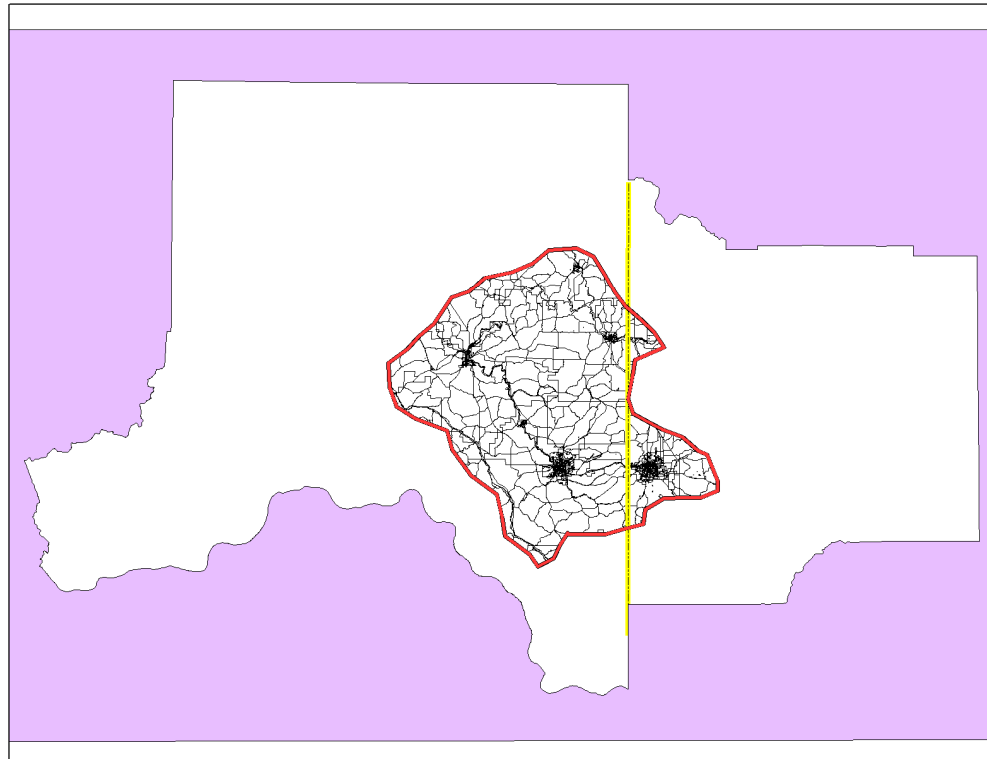
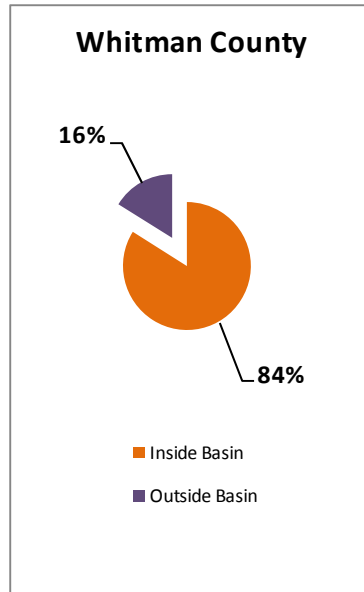
2010 Census Block Example



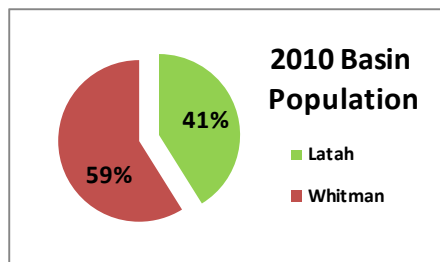
2010 Census Block Example



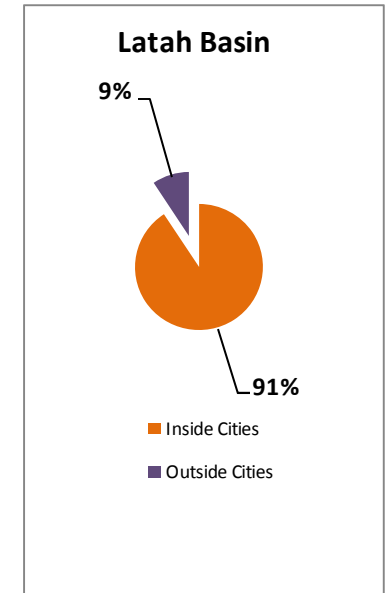
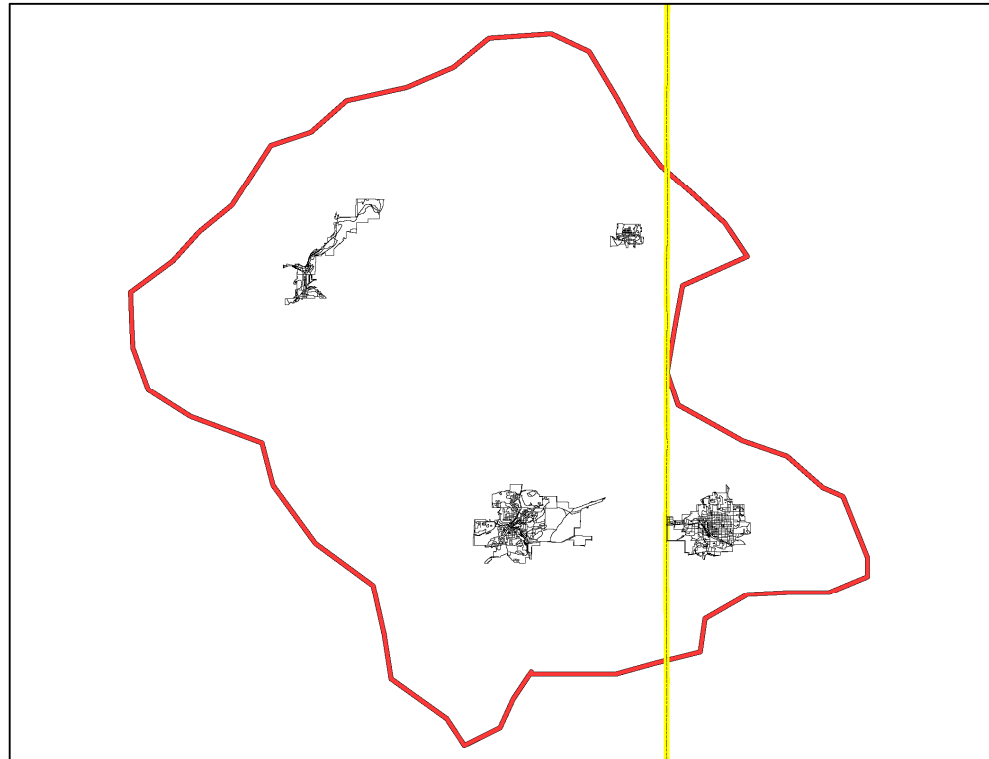
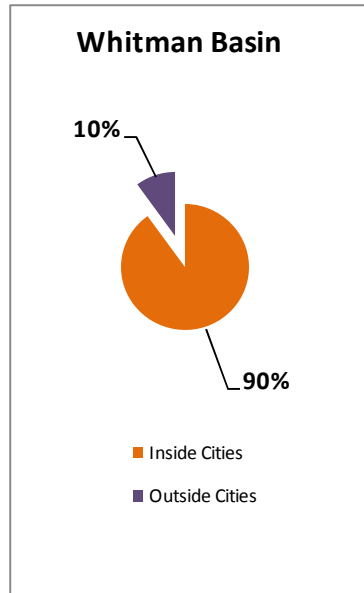
2010 Palouse Basin Population Breakdown



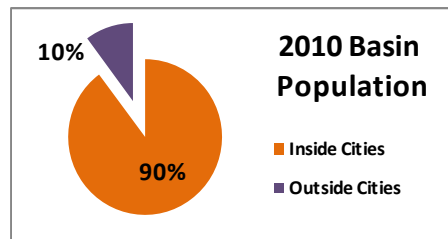
	2010 Population				
	Total	Within Basin	% Inside	Outside Basin	% Outside
Basin	63,835	N/A	N/A	N/A	N/A
Latah County	37,244	26,250	70%	10,994	30%
Whitman County	44,776	37,585	84%	7,191	16%



2010 Palouse Basin Cities Population Breakdown



	2010 Population				
	Total	Within Cities	% Inside	Outside Cities	% Outside
Basin	63,835	57,402	90%	6,433	10%
Latah w/in Basin	26,250	23,800	91%	2,450	9%
Whitman w/in Basin	37,585	33,602	89%	3,983	11%



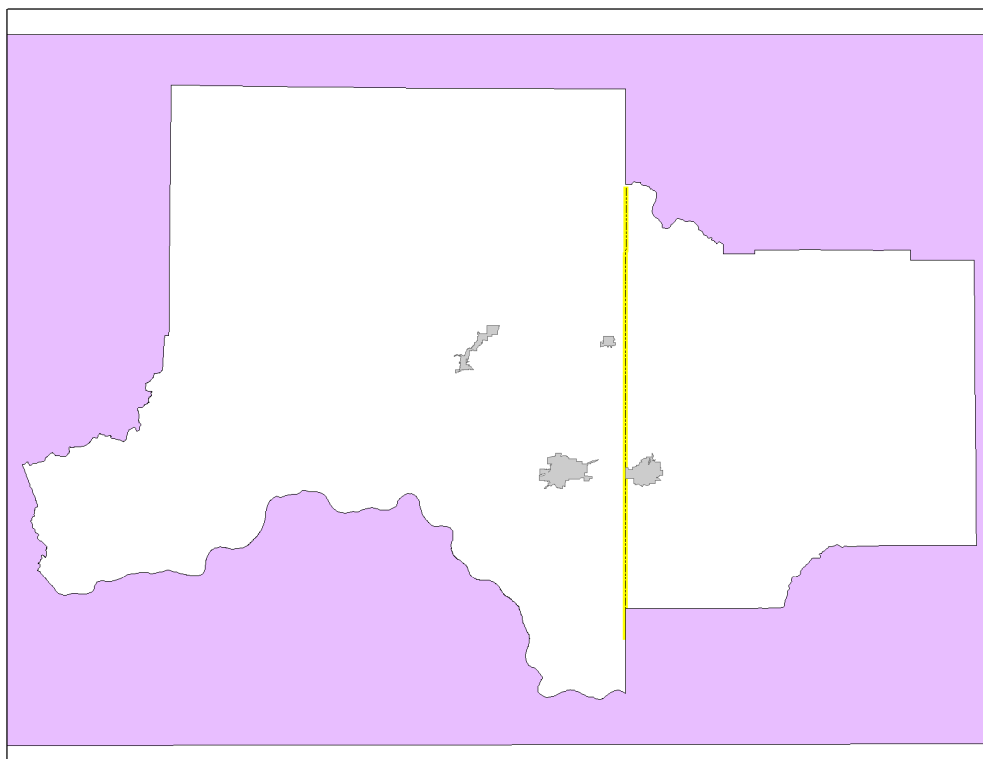
2010 Water Use

2010 Basin Cities Annual Water Use = 2.517 BG

2010 Basin Cities Population = 57,402

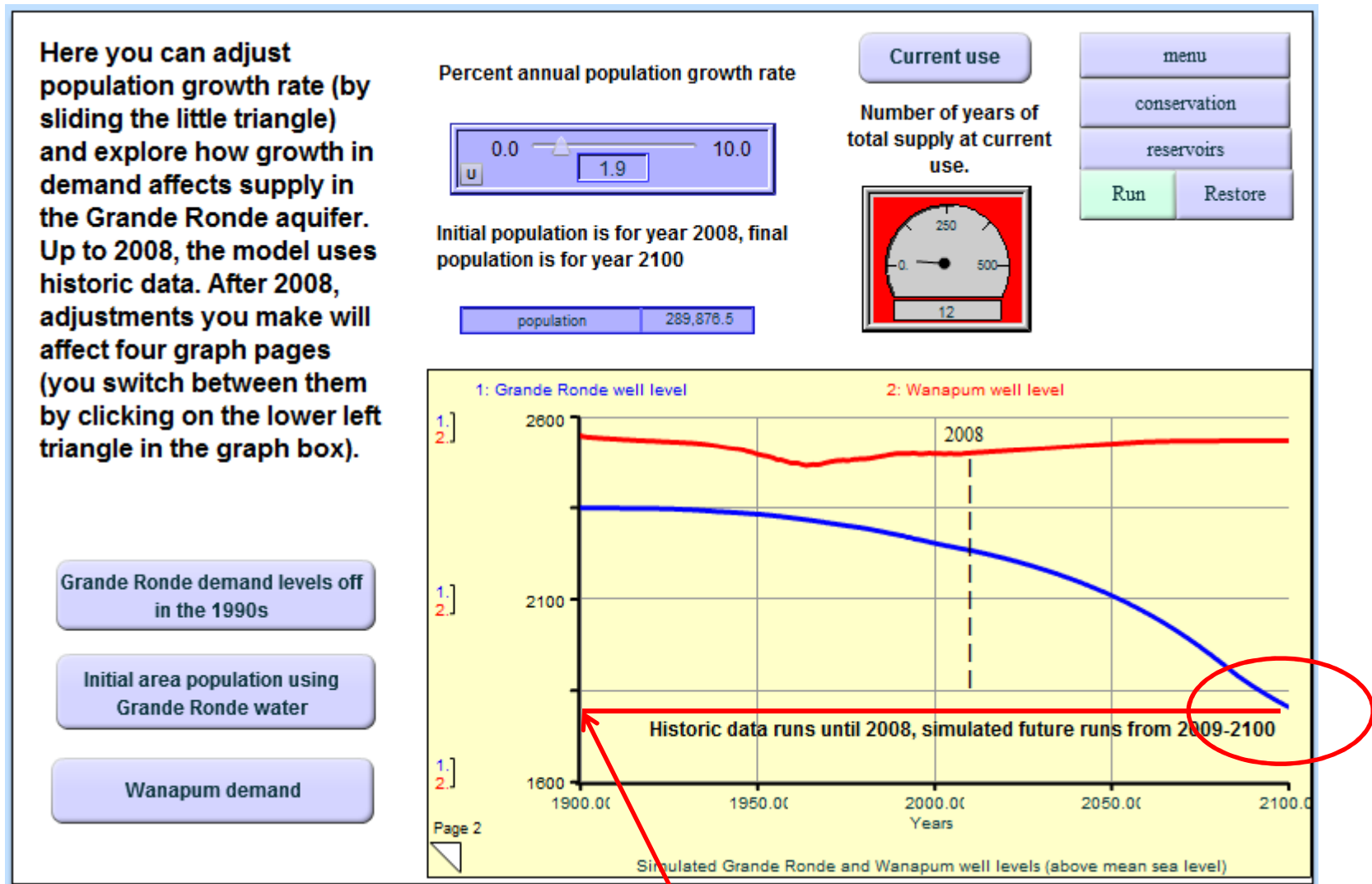
2010 Per Capita Water Use \approx 120 gal/day

Population Growth Rates: 2000 - 2010



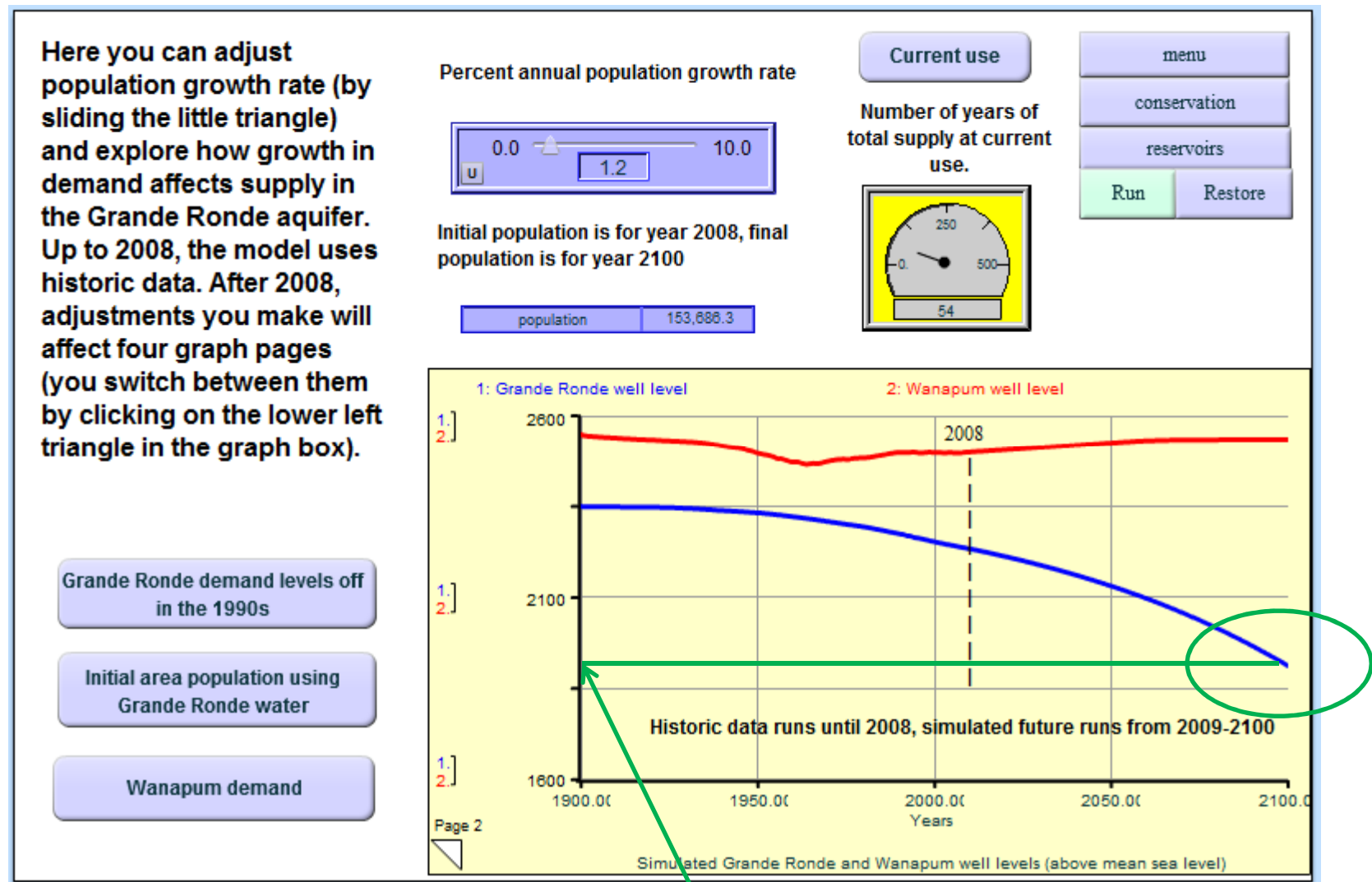
		2010 Pop	2000 Pop	Change	Avg Growth Rate
	Pullman	29,799	24,675	5,124	1.9%
	Palouse Basin	63,835	56,452	7,383	1.2%
	Moscow	23,800	21,291	2,509	1.1%
	Whitman County	44,776	40,740	4,036	0.9%
	Latah County	37,244	34,935	2,309	0.6%
	Palouse	998	1,011	-13	-0.1%
	Colfax	2,805	2,844	-39	-0.1%

WoW Model Estimated Water Levels: Year 2100 – 1.9% Annual Growth



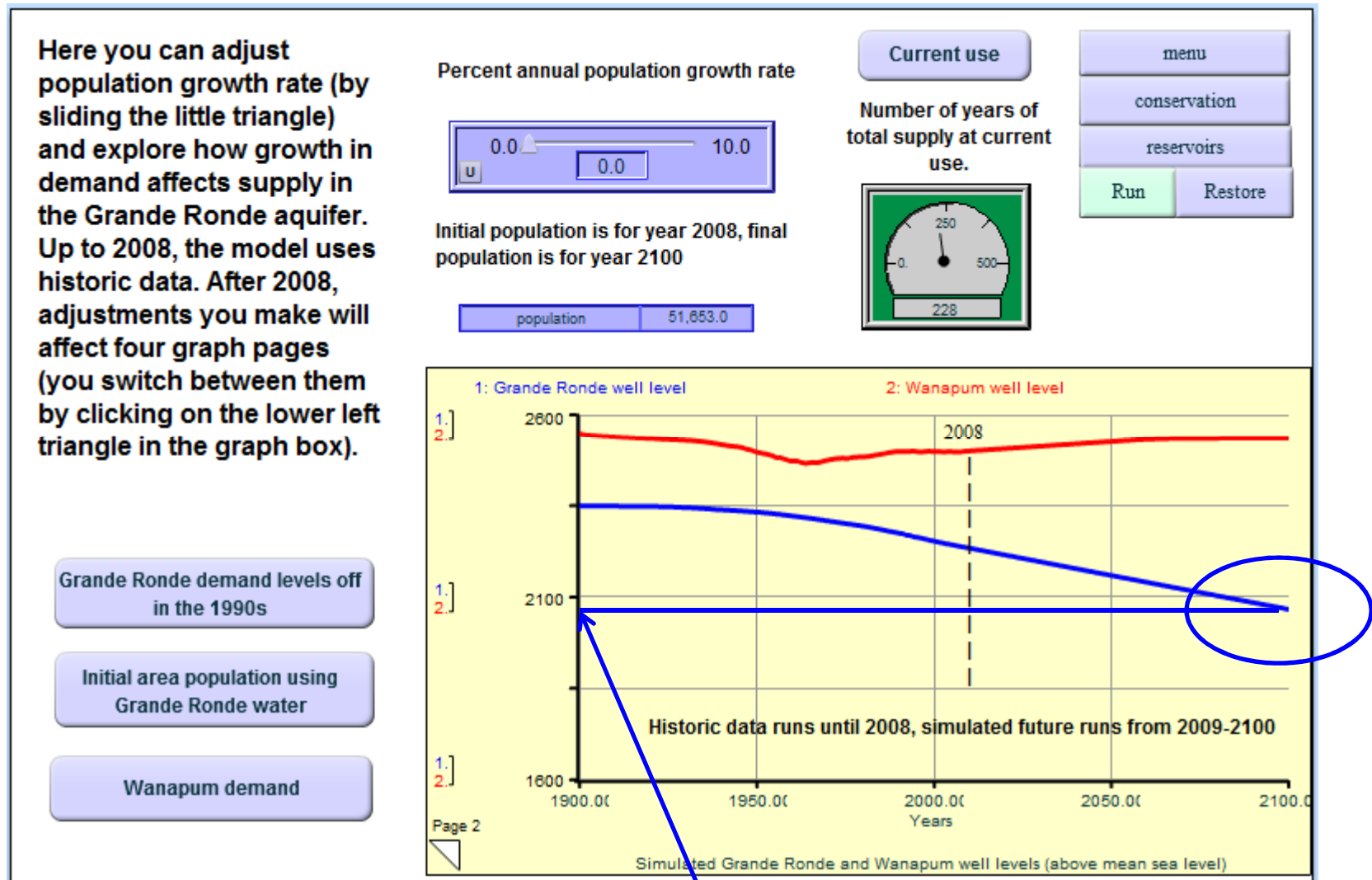
≈ 1800 famsl

WoW Model Estimated Water Levels: Year 2100 – 1.2% Annual Growth



≈ 1900 famsl

WoW Model Estimated Water Levels: Year 2100 – No Annual Growth



≈ 2050 fmsl

Estimated Water Levels - Year 2100

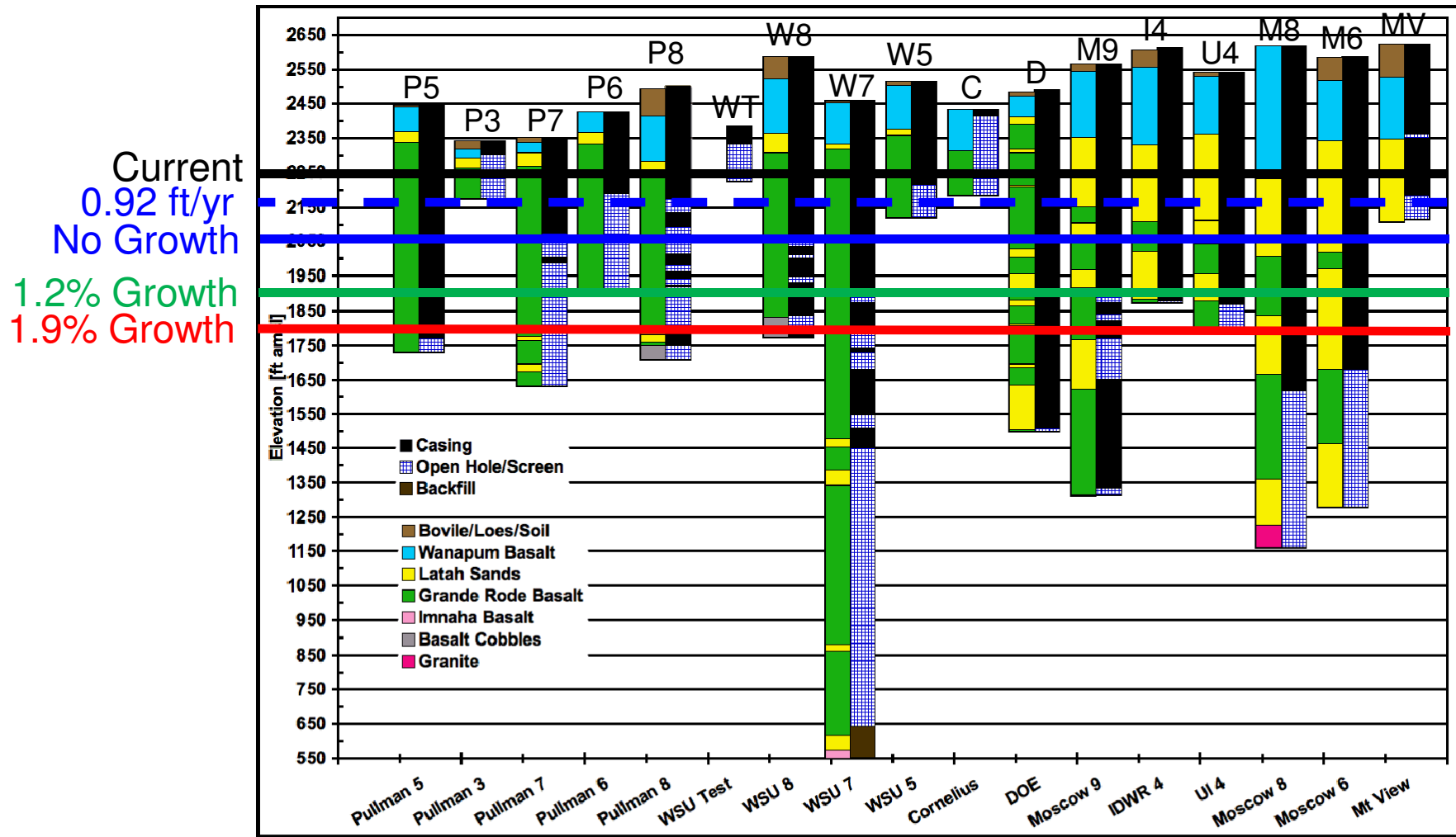


Figure 10. Comparison of open hole or screened zones and geology for wells used in this study. Cased (black) and open (blue cross hatch) sections of the wells next to a simplified geology.

Estimated Water Levels - Year 2100

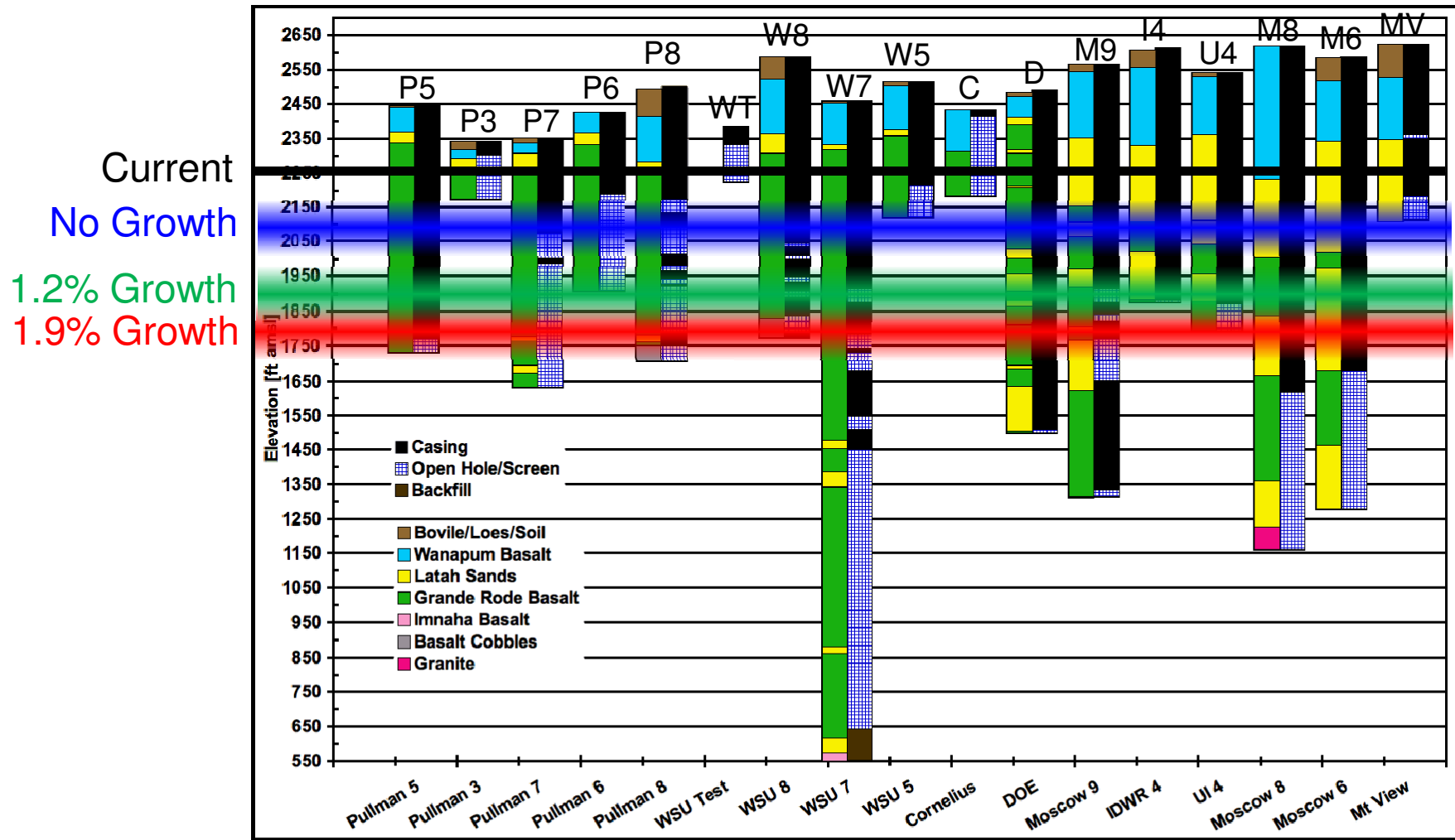


Figure 10. Comparison of open hole or screened zones and geology for wells used in this study. Cased (black) and open (blue cross hatch) sections of the wells next to a simplified geology.

?