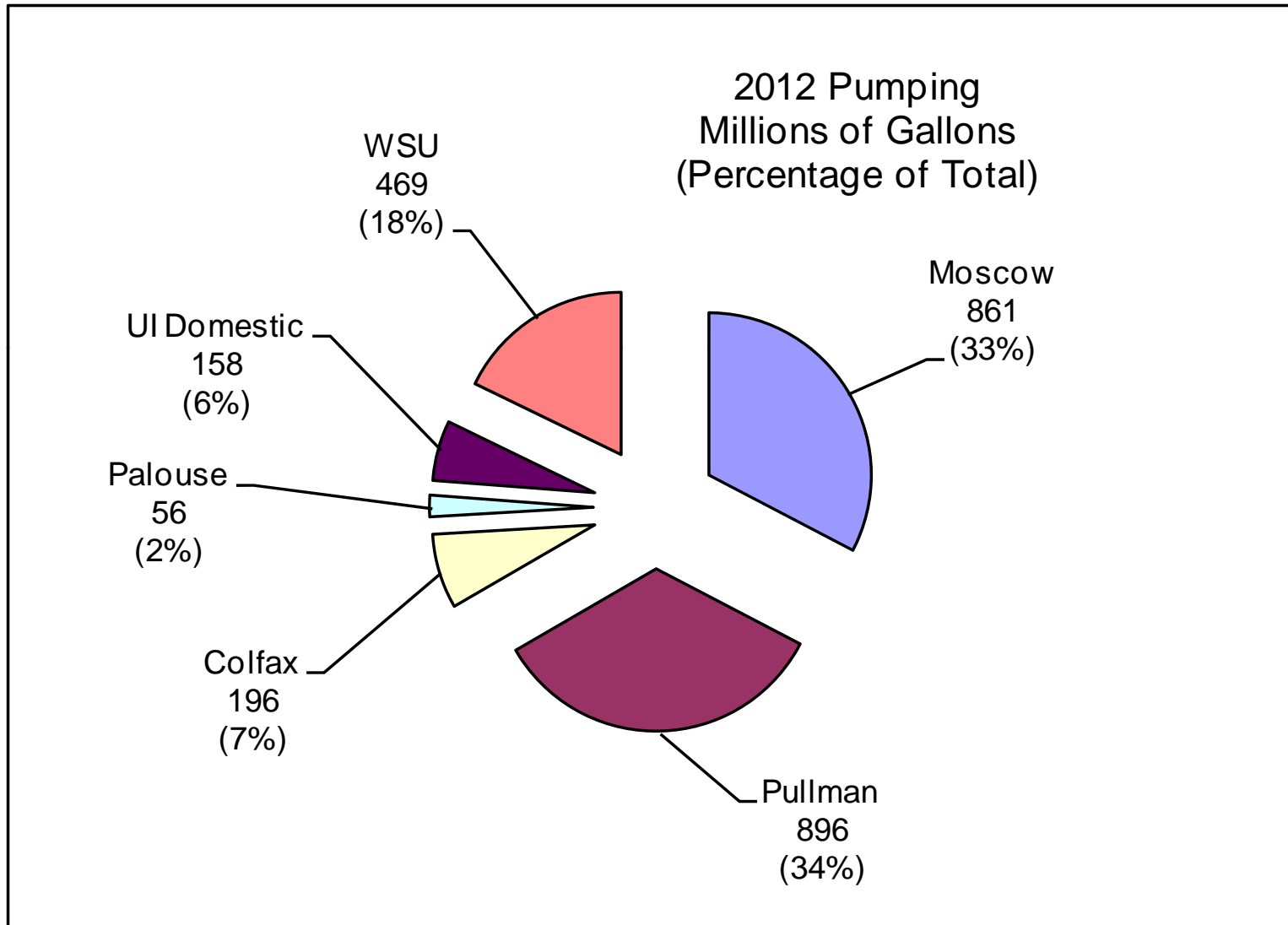


2012 PBAC Pumping and Climate
PBAC Meeting
January 17, 2013

2012 PBAC Pumping*

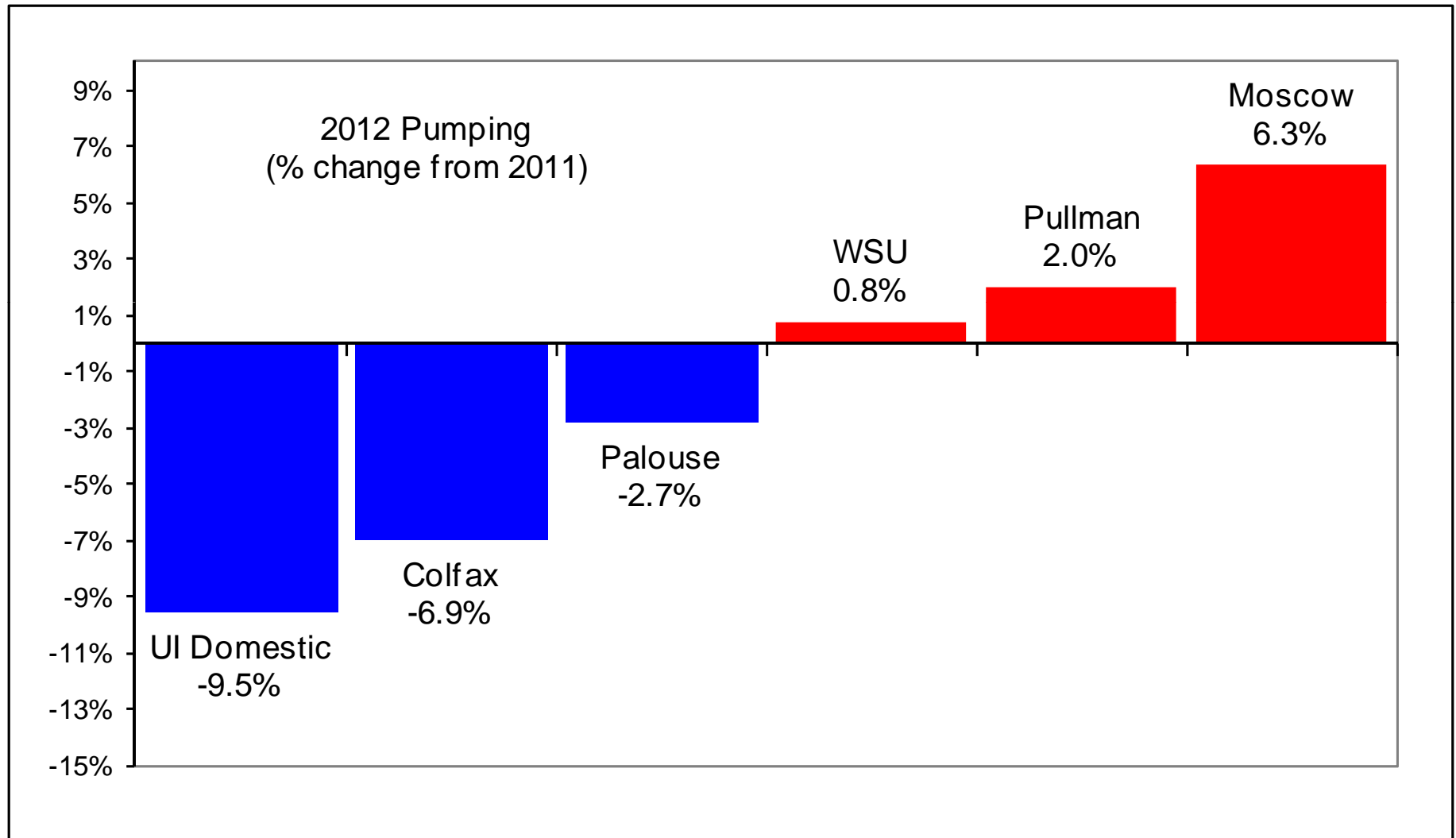
Aggregate Pumping = 2.64 Billion Gallons



* - WSU Well 6 December 2012 Estimated

2012 PBAC Pumping* - Percentage Change from 2011

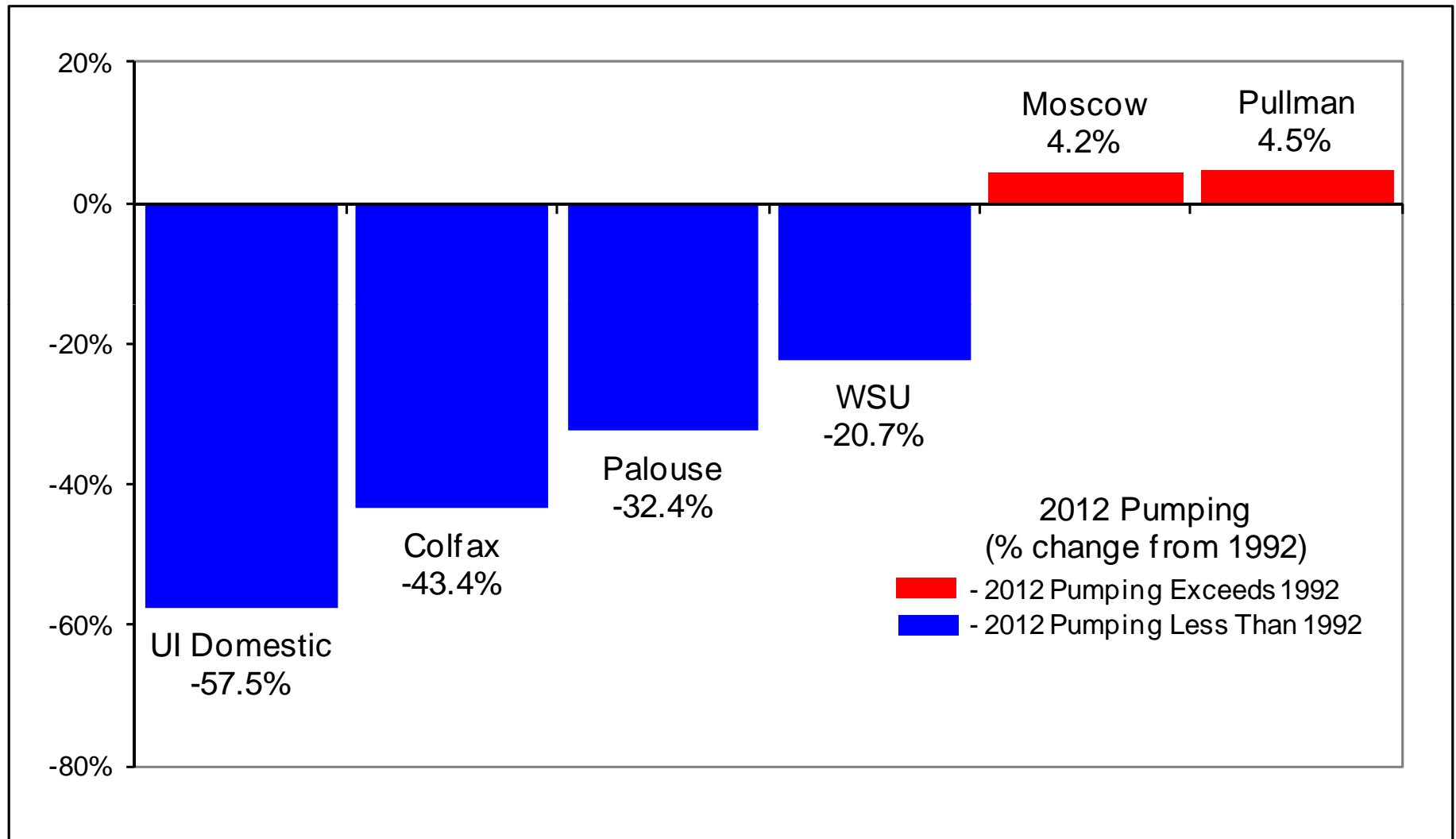
Aggregate Change = +1.5%



* - WSU Well 6 December 2012 Estimated

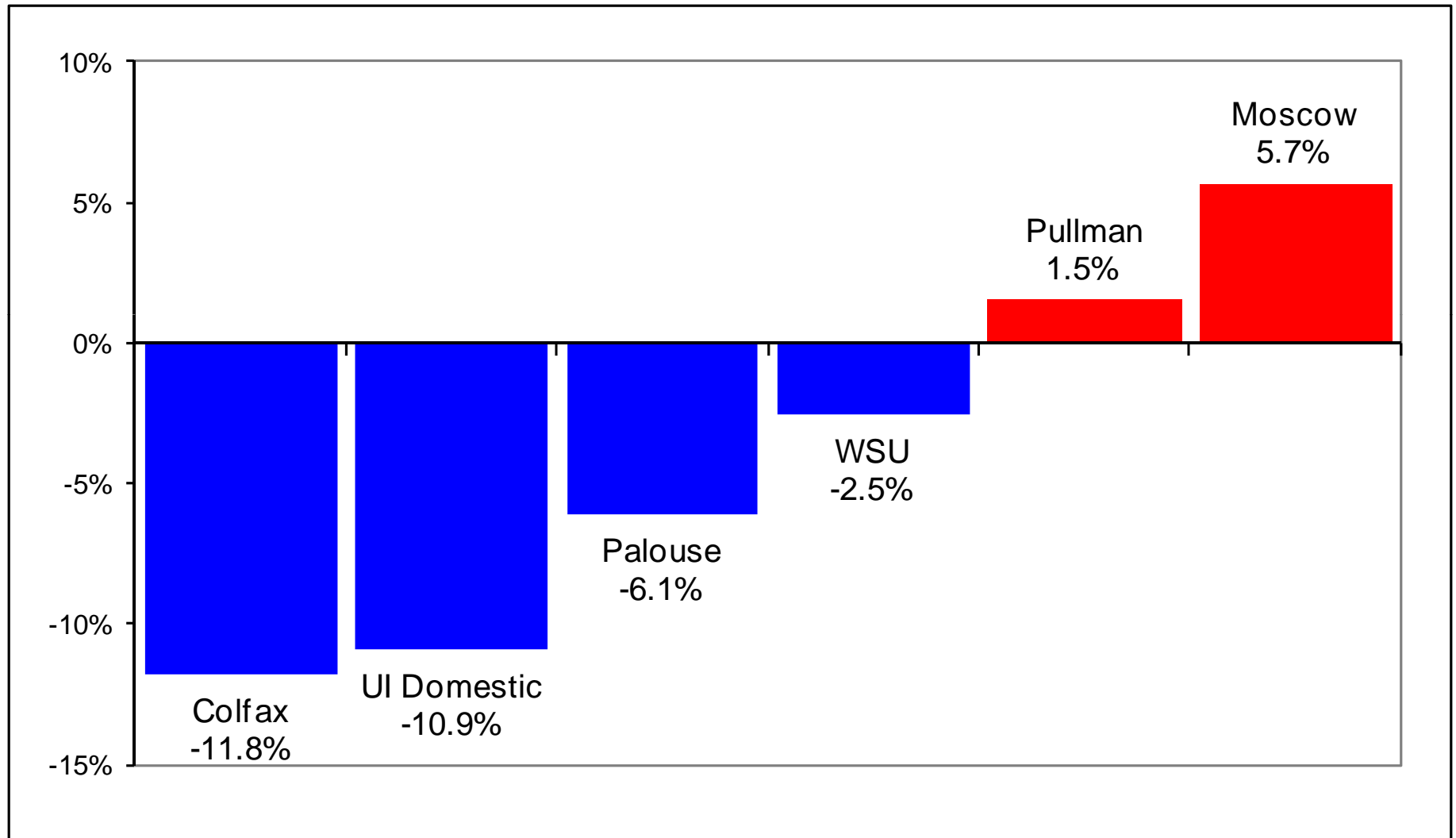
2012 PBAC Pumping* - Percentage Change from 1992

Aggregate Change = -14.6%



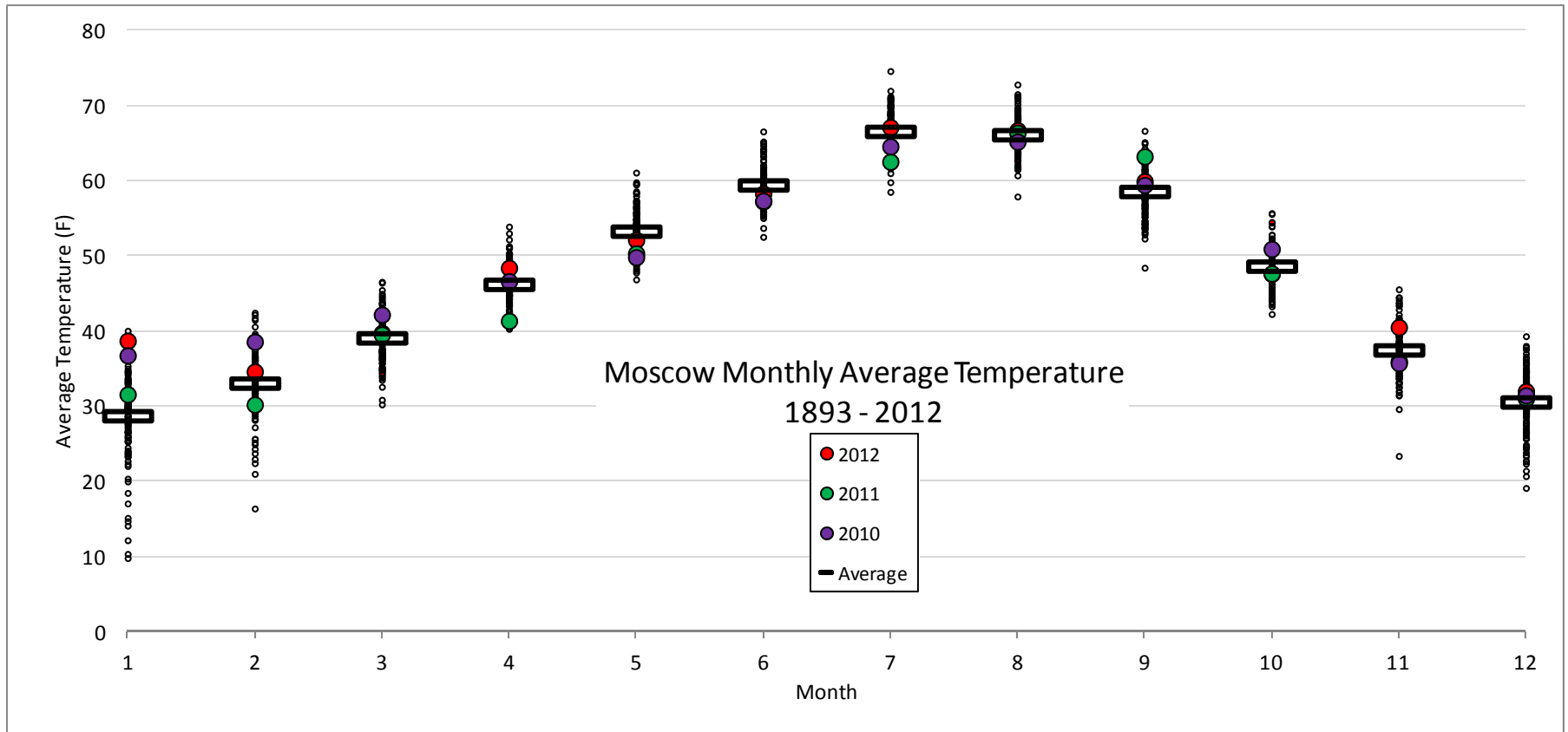
* - WSU Well 6 December 2012 Estimated

2012 PBAC Pumping* - Percentage Change from 2007-2011 Average
Aggregate Change = -0.1%

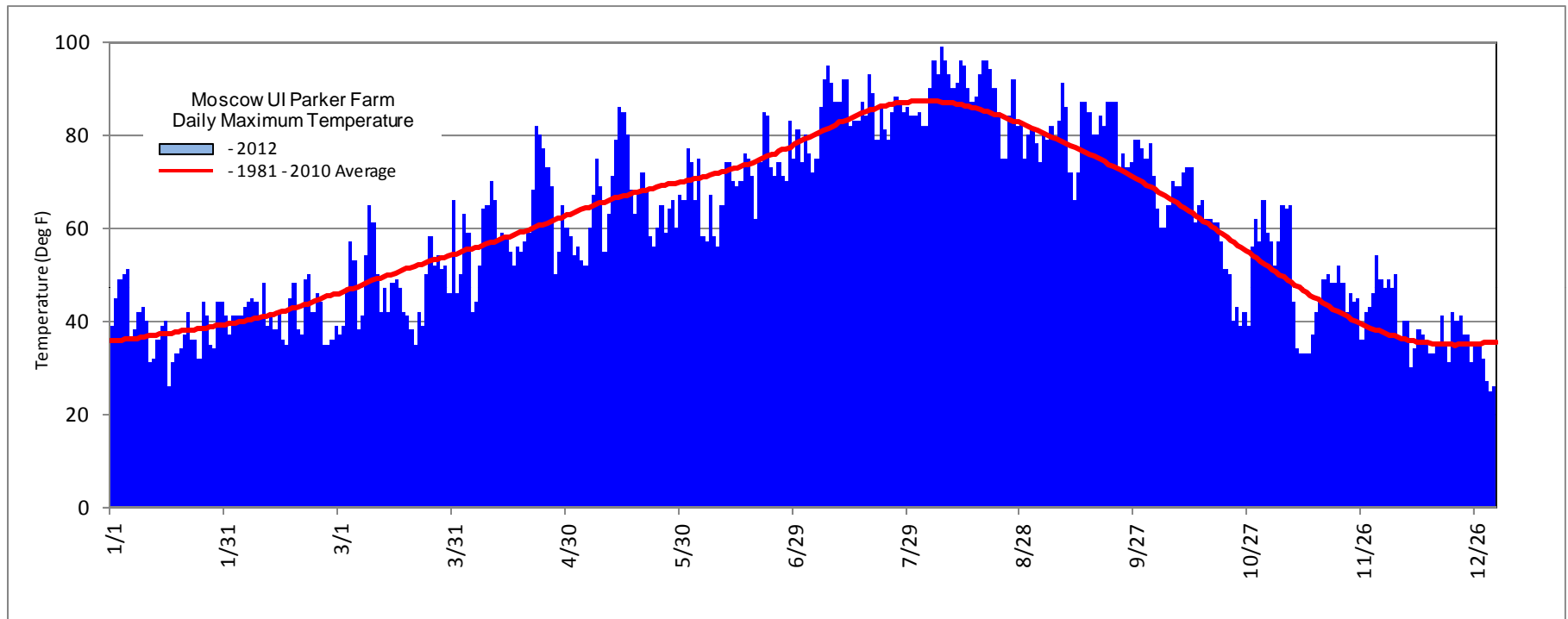


* - WSU Well 6 December 2012 Estimated

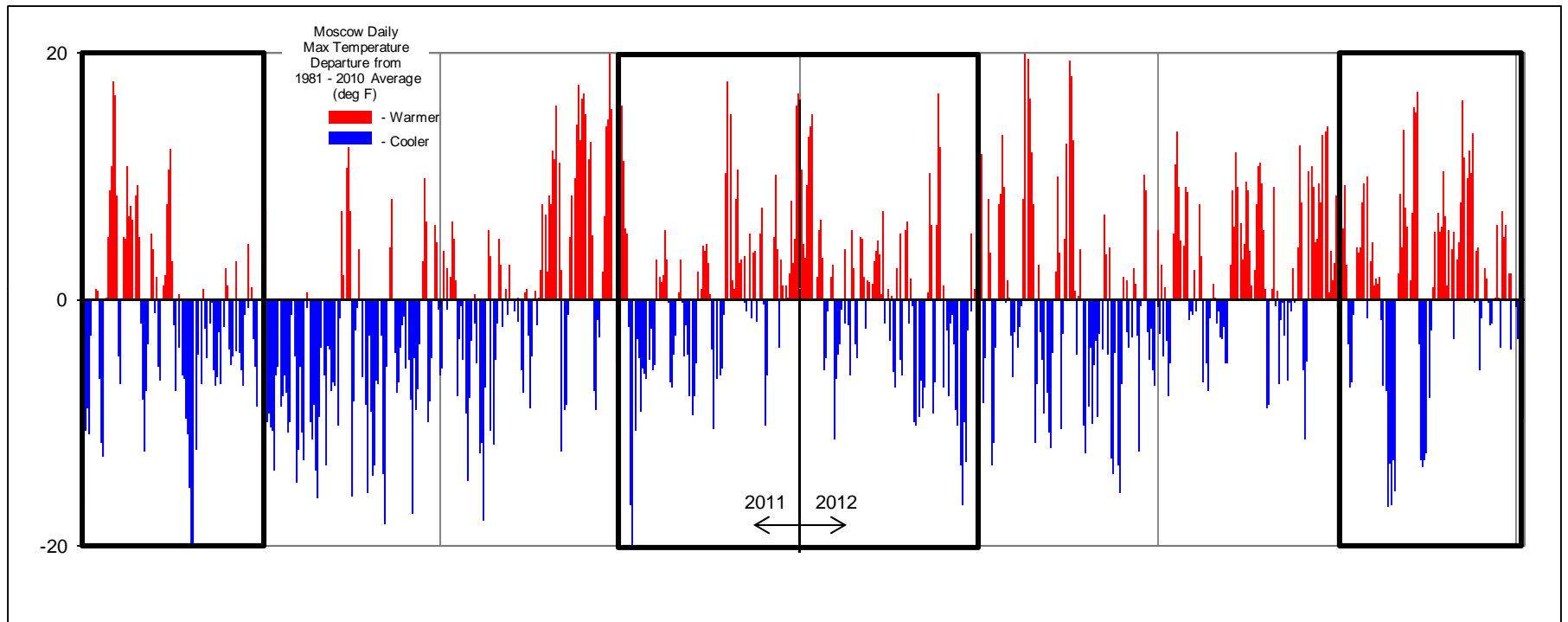
2012 Monthly Average Temperature UI Plant Science Farm



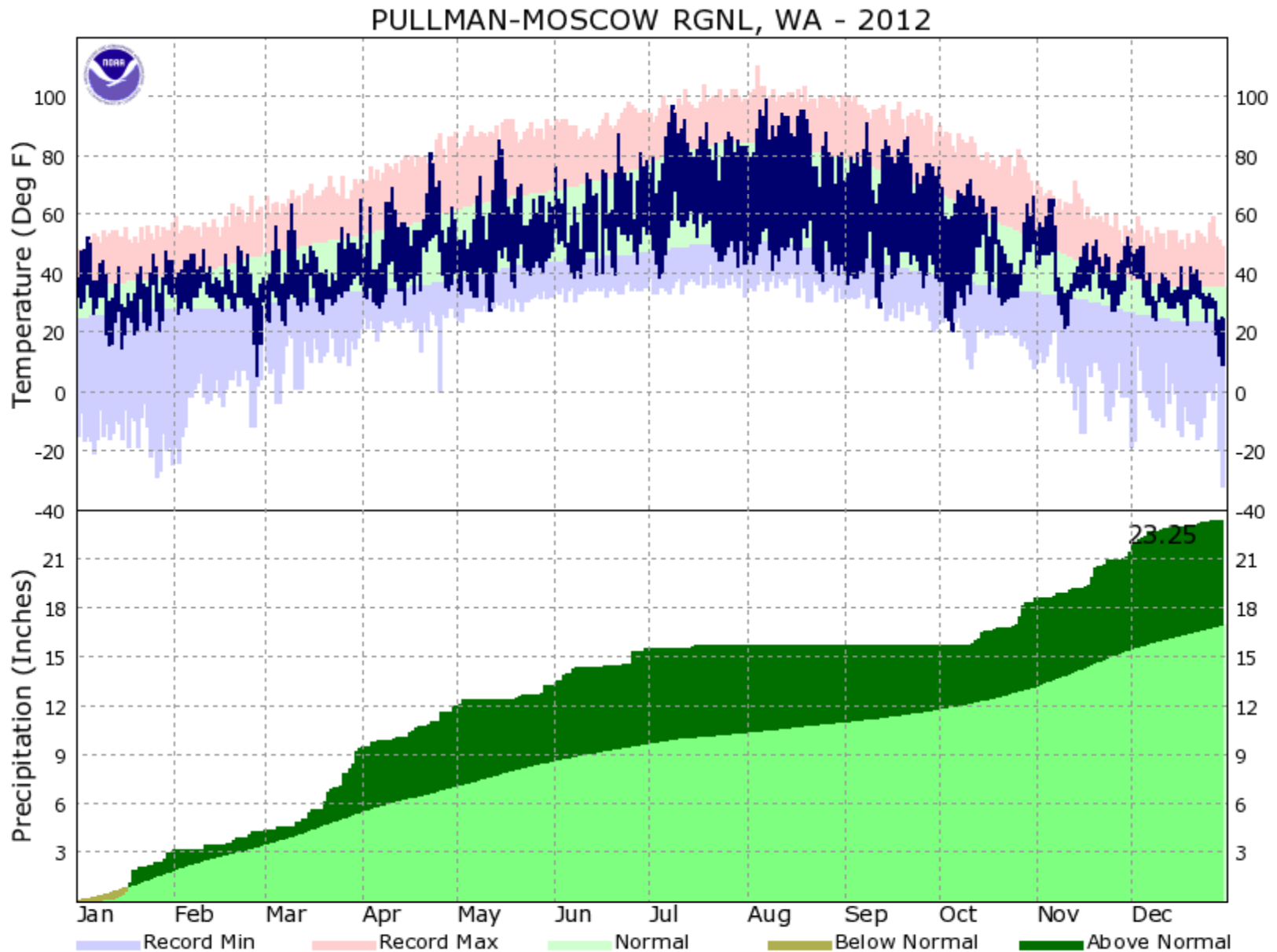
2012 Daily Maximum Temperature UI Plant Science Farm



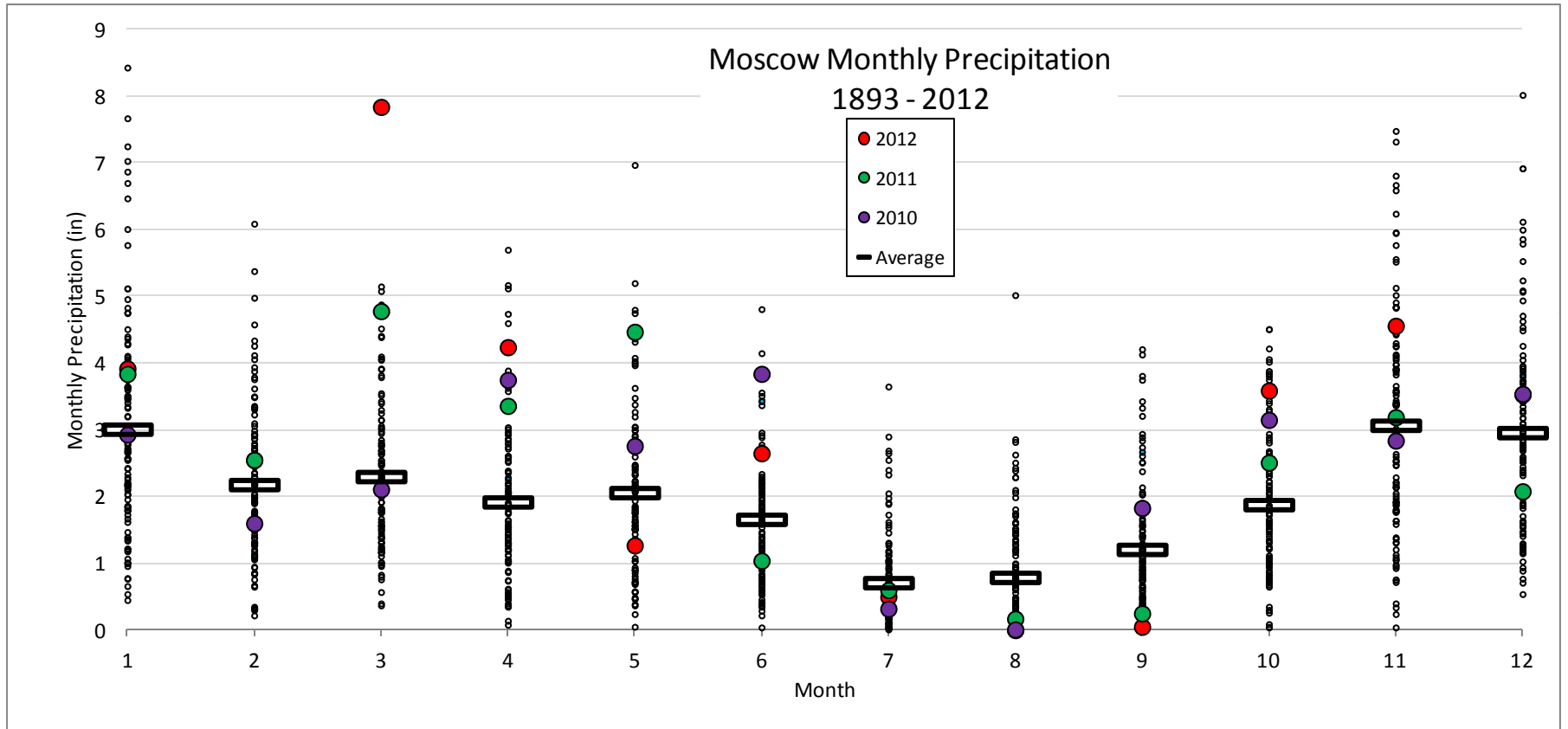
2011-2012 Temperature Departure from Average UI Plant Science Farm



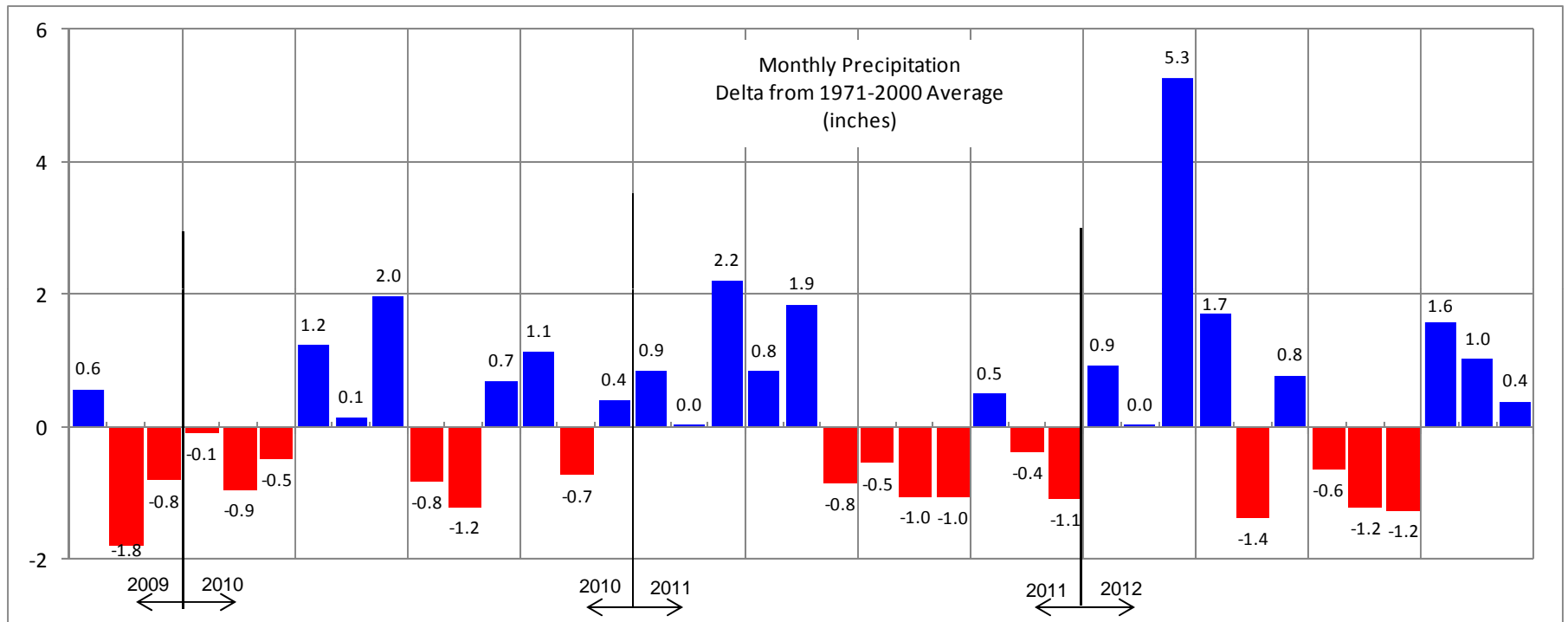
2012 Temperature and Precipitation - Airport



2011-2012 Monthly Precipitation UI Plant Science Farm



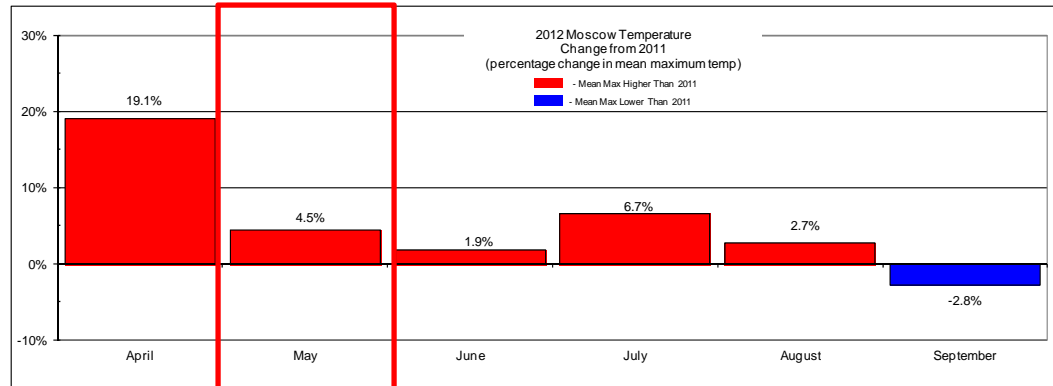
2010-2012 Precipitation Departure from Average UI Plant Science Farm



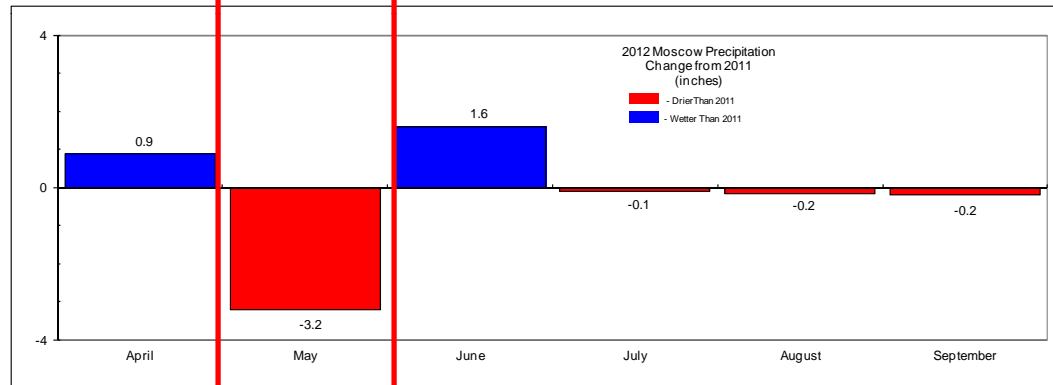
2012 Irrigation Season Climate – UI Plant Science Farm

Change from 2011

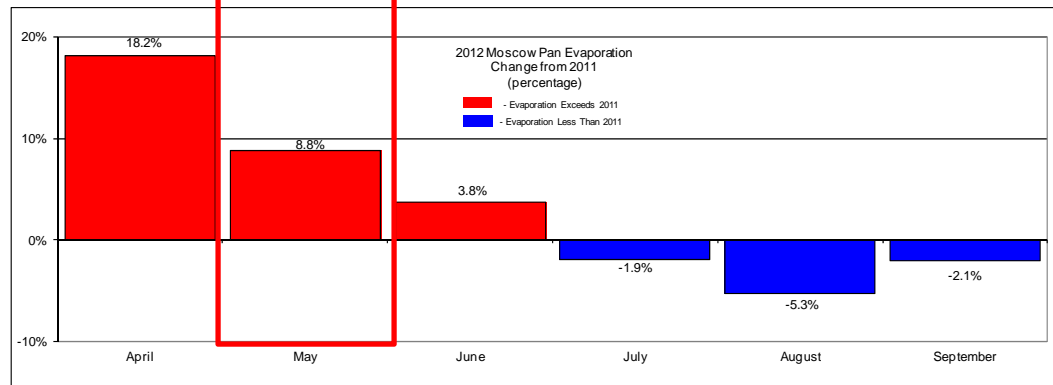
Mean Max
Temperature



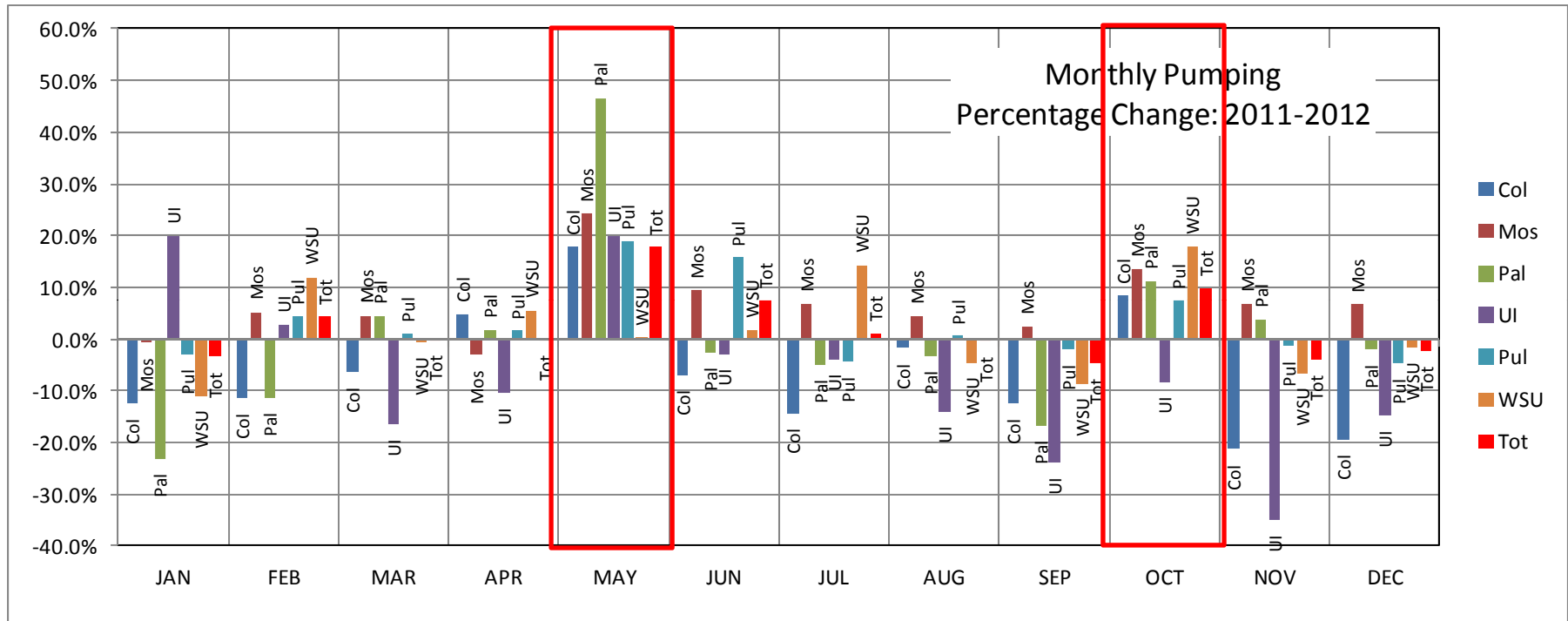
Precipitation



Pan
Evaporation

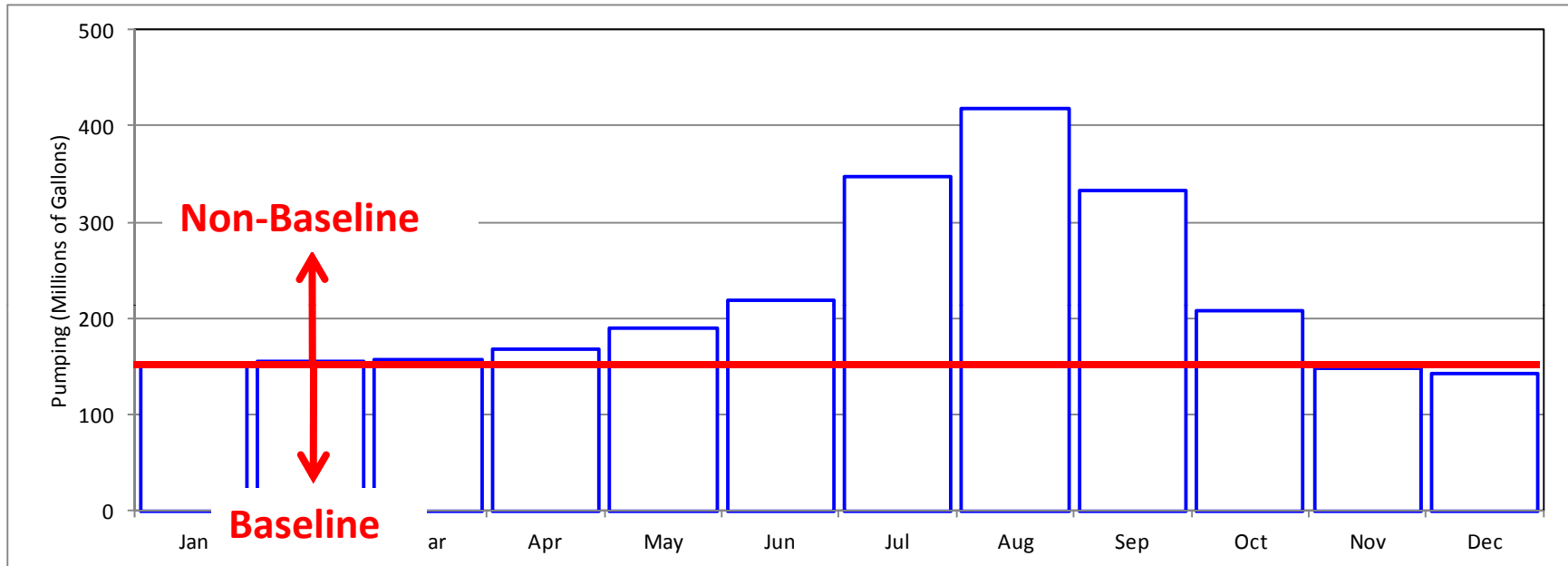


2012 PBAC Pumping* - Percentage Change from 2011 Monthly Pumping

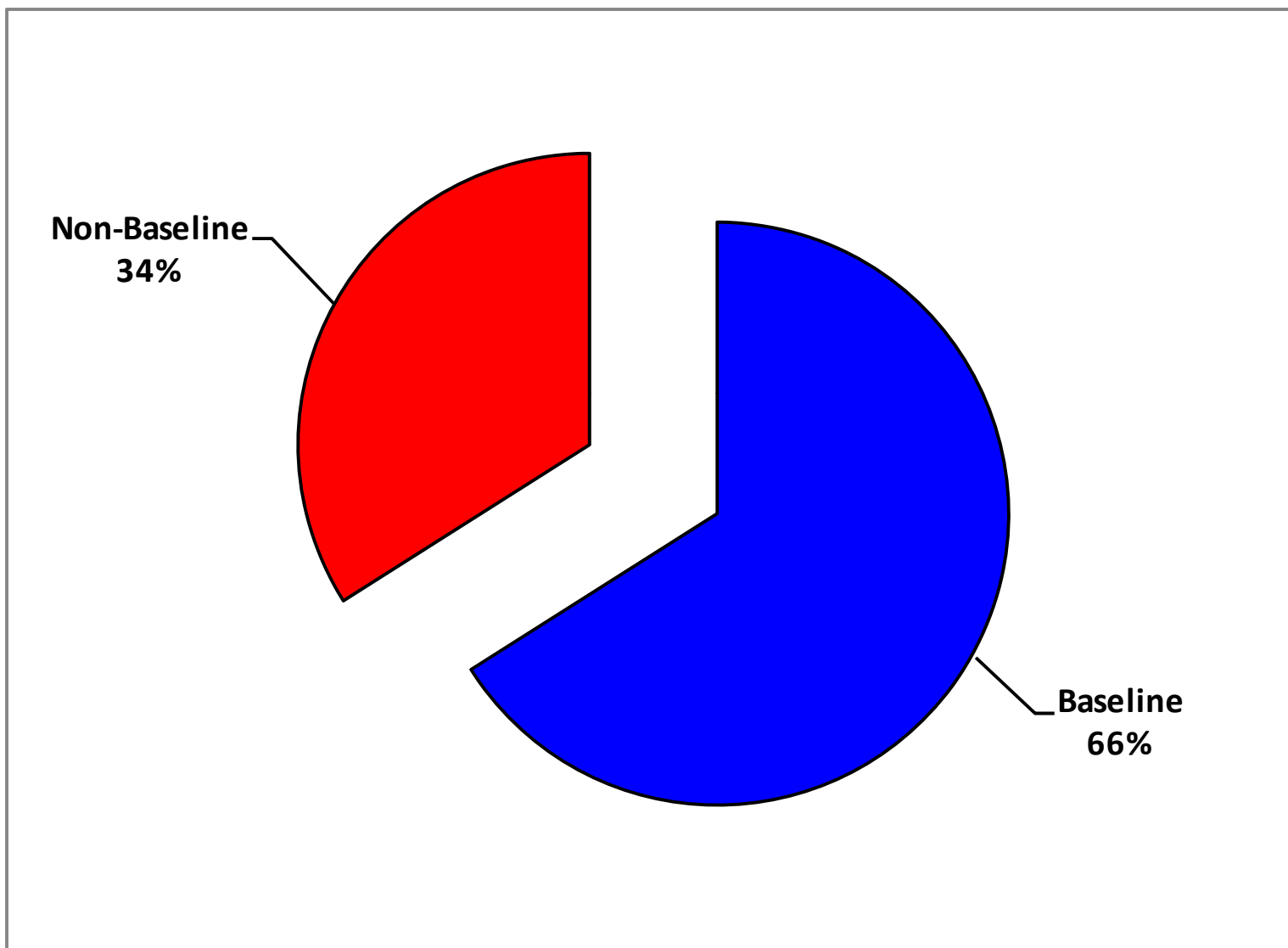


* - WSU Well 6 December 2012 Estimated

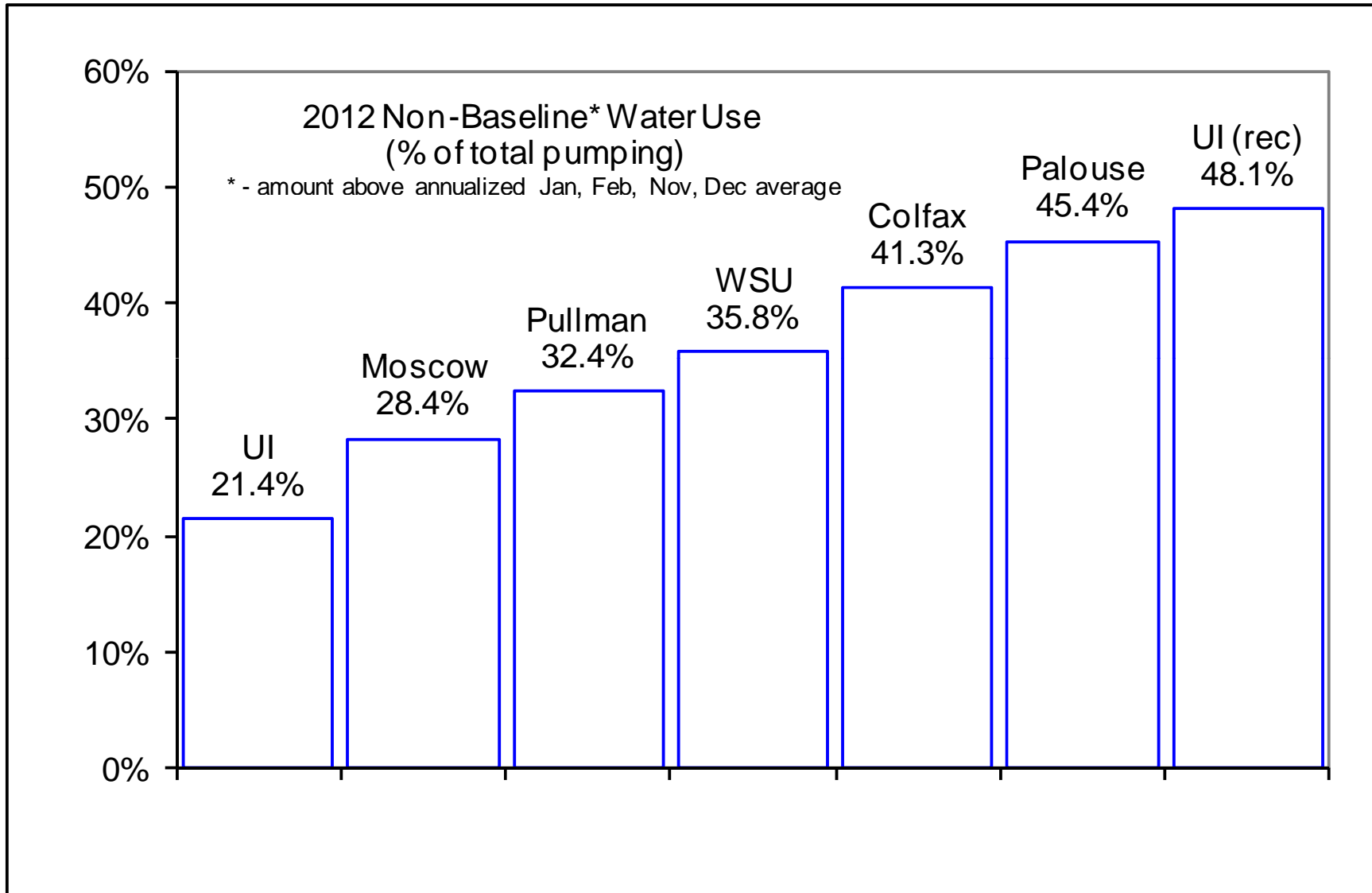
Water Use – Baseline and Non-Baseline



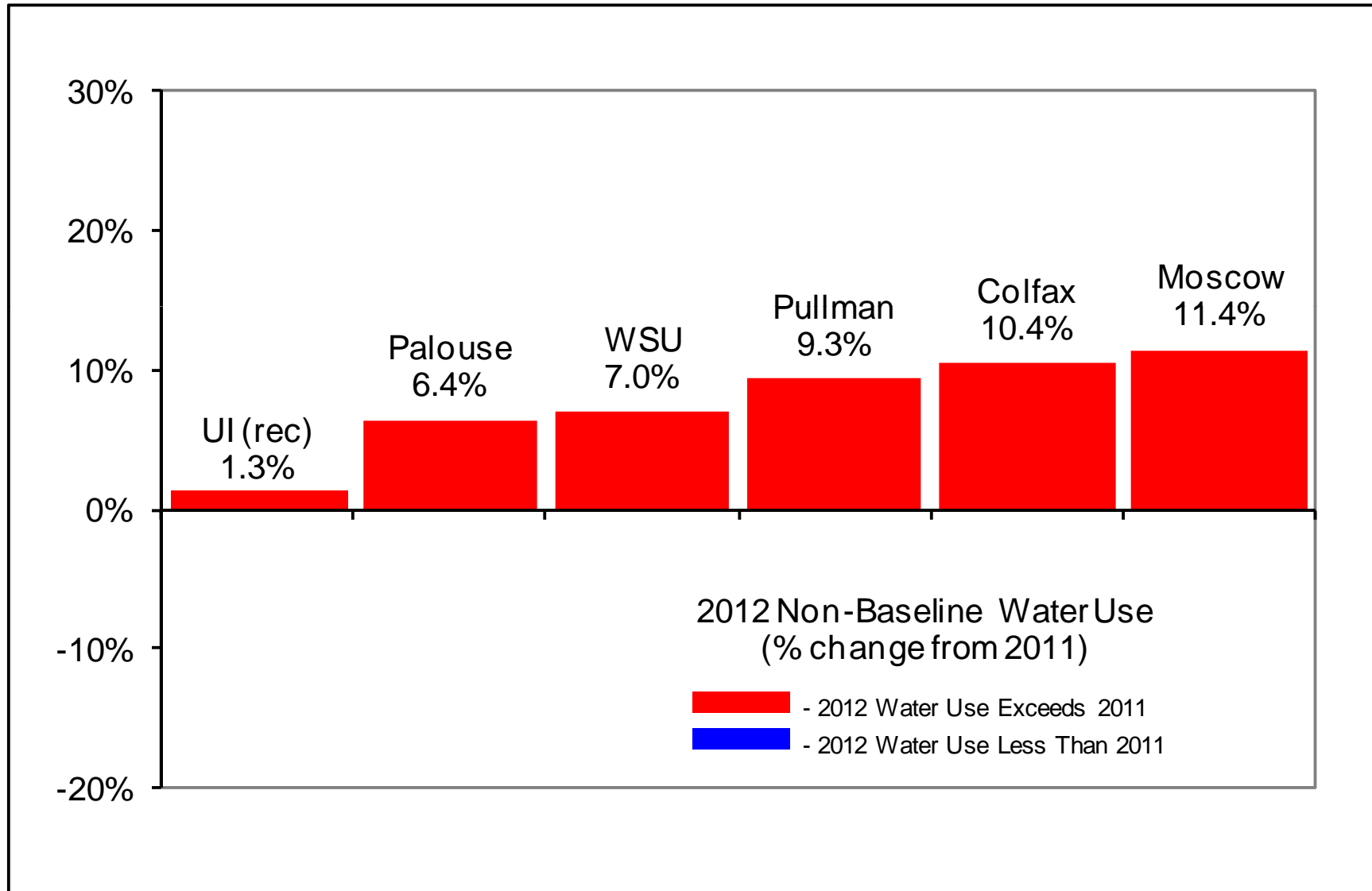
2012 Aggregate Total Water Use



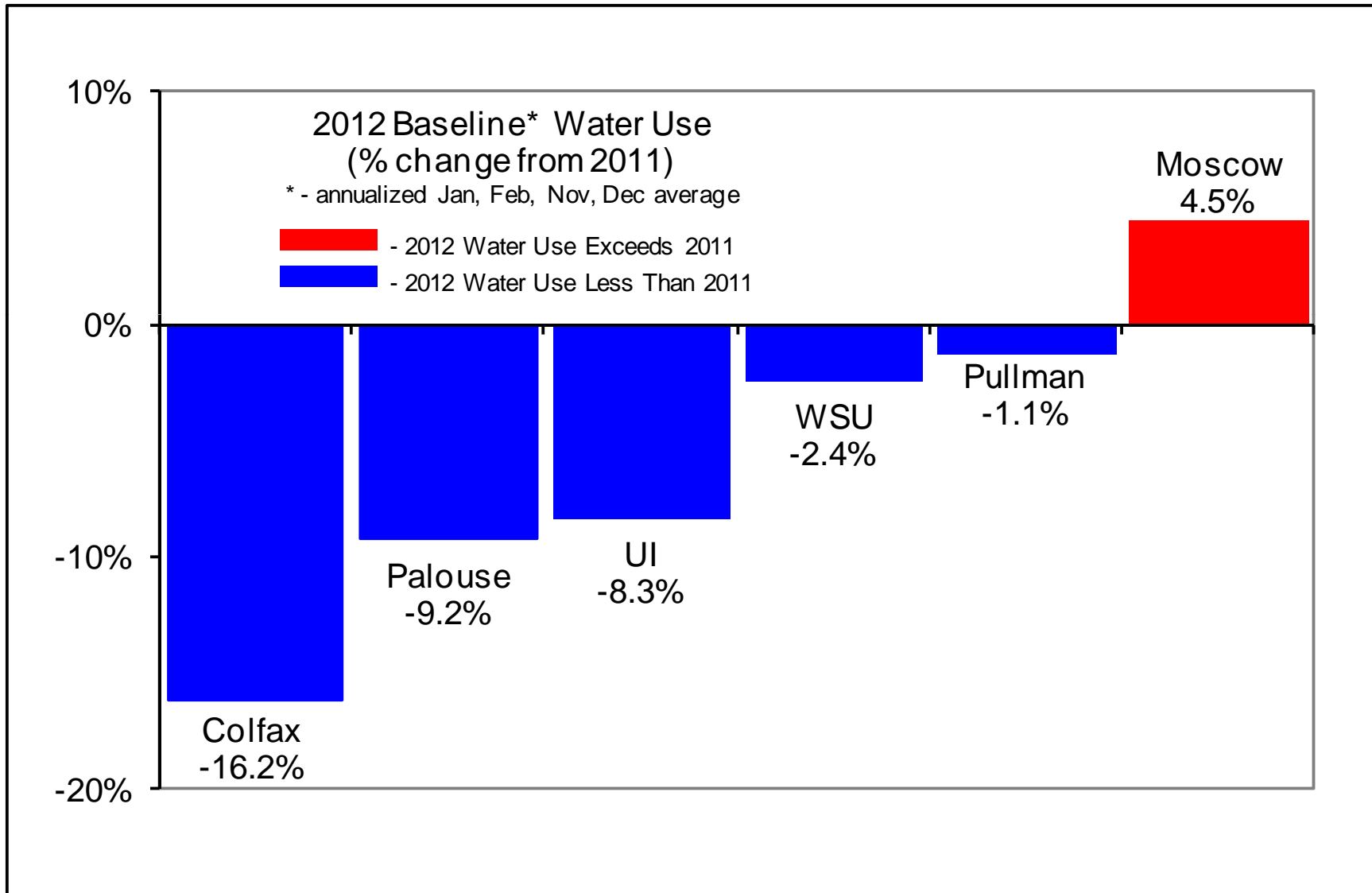
2012 Non-Baseline Water Use



2012 Non-Baseline Water Use Percentage Change From 2011



2012 Baseline Water Use Percentage Change From 2011



2012 PBAC Pumping
PBAC Meeting
January 17, 2013