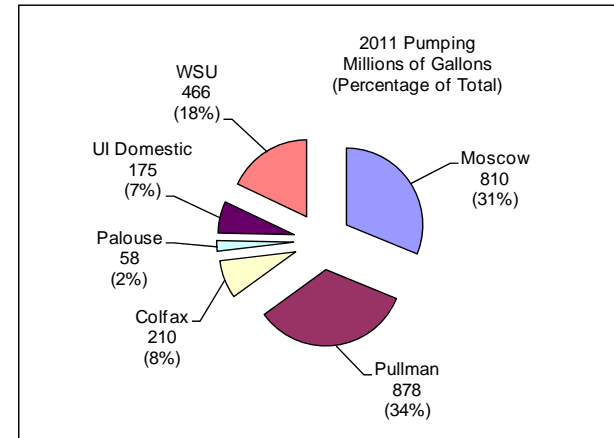


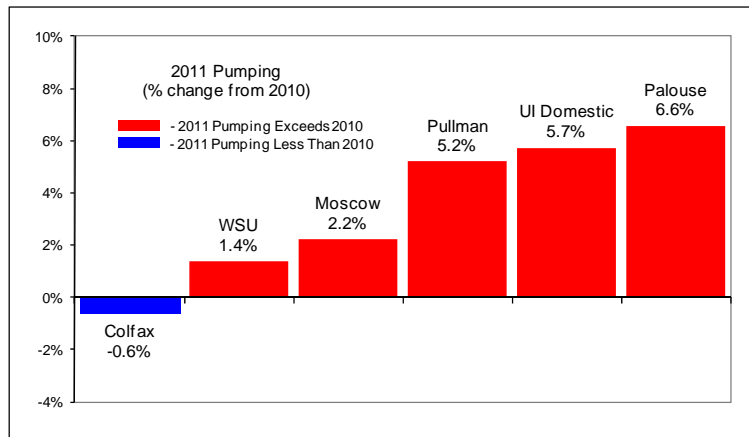
2011 PBAC Pumping and Water Levels
PBAC Meeting
March 15, 2012

2011 PBAC Pumping*
Aggregate Pumping = 2.6 Billion Gallons



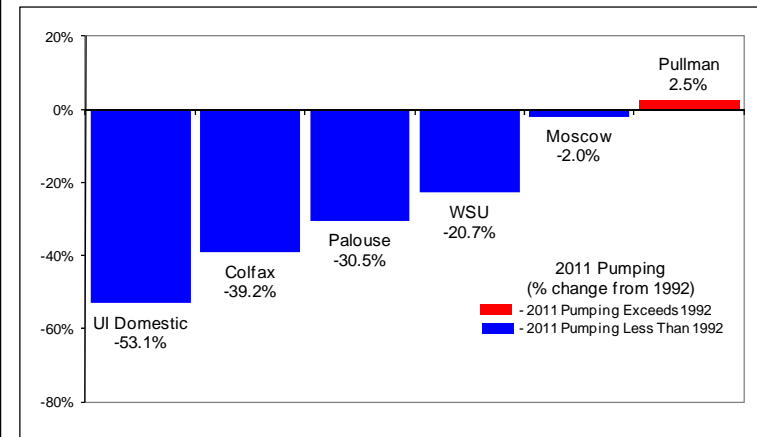
* - Colfax Nov/Dec Numbers Estimated

2011 PBAC Pumping* - Percentage Change from 2010
Aggregate Change = +3.1%

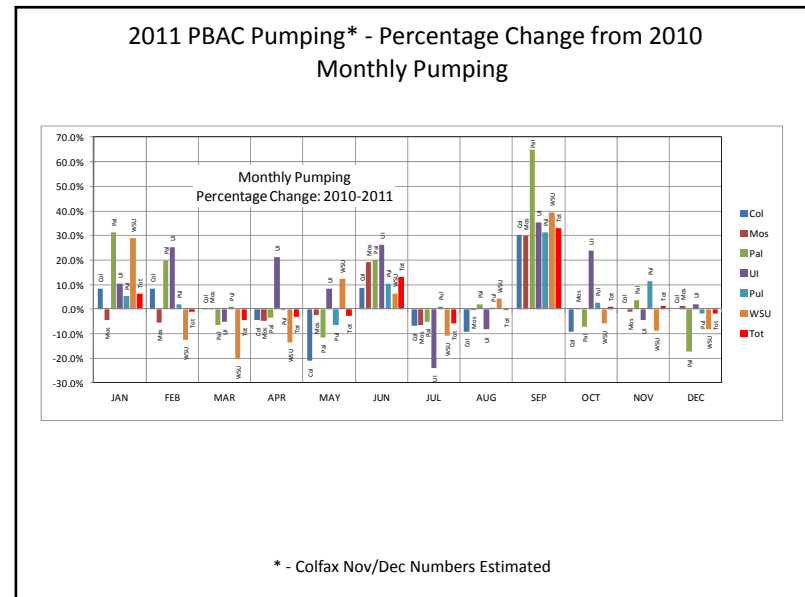
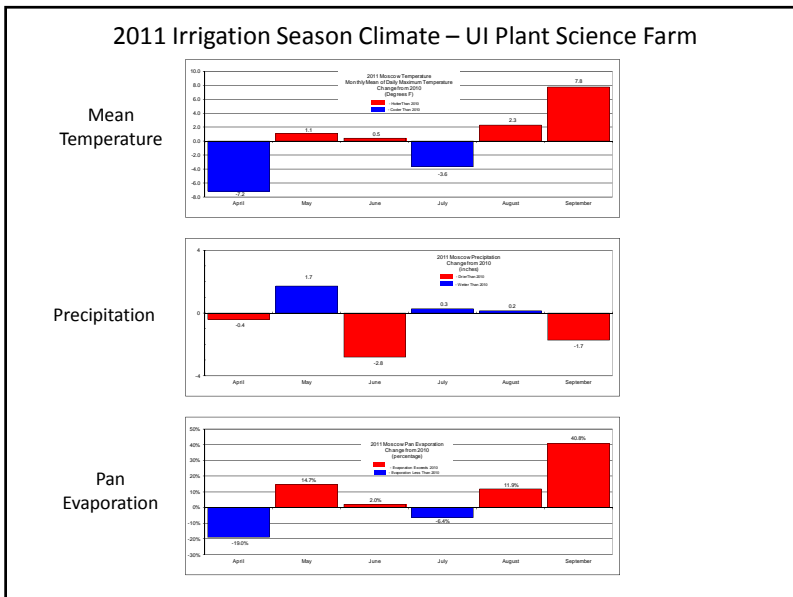
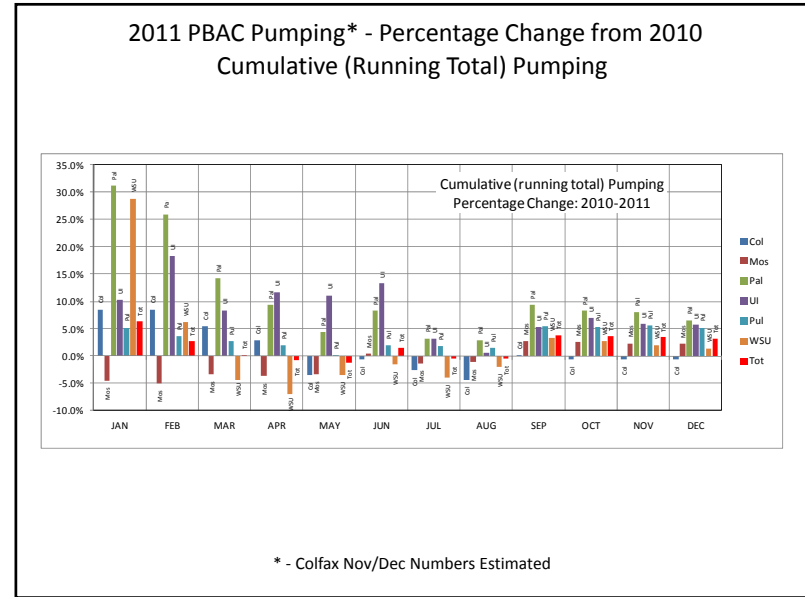
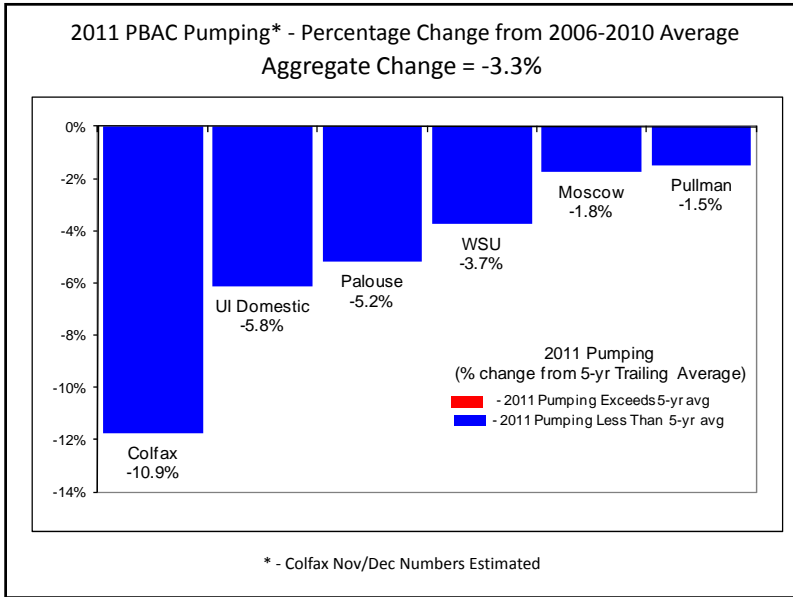


* - Colfax Nov/Dec Numbers Estimated

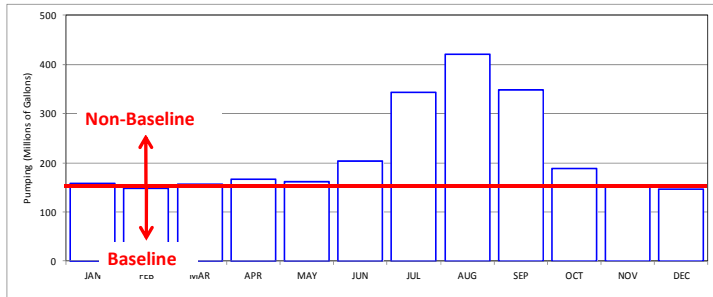
2011 PBAC Pumping* - Percentage Change from 1992
Aggregate Change = -15.9%



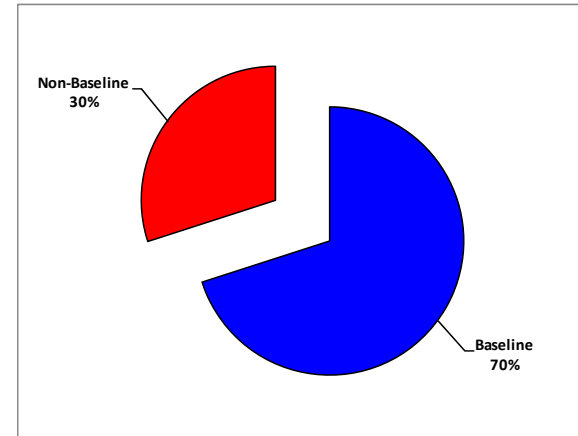
* - Colfax Nov/Dec Numbers Estimated



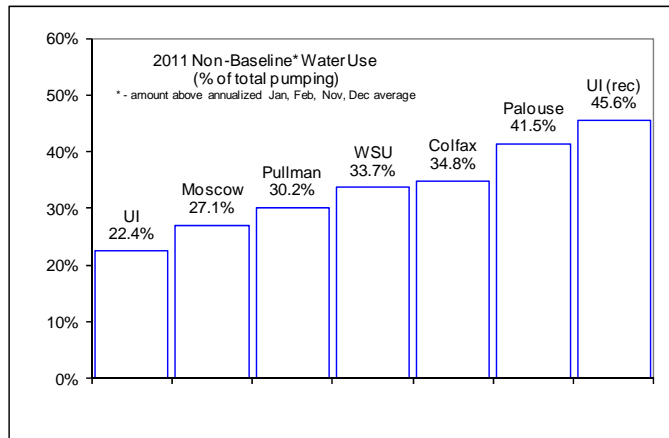
Water Use – Baseline and Non-Baseline



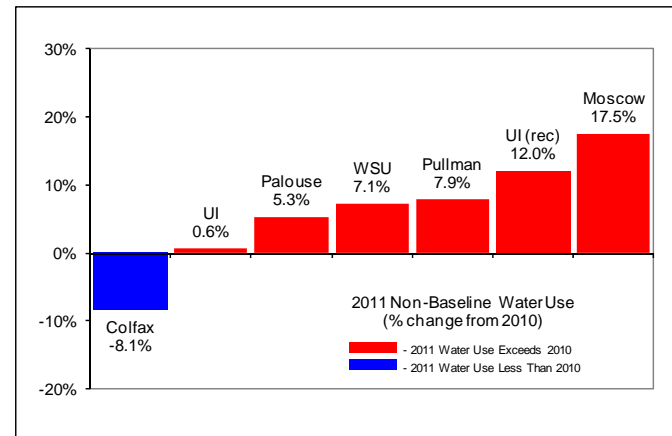
2011 Aggregate Total Water Use



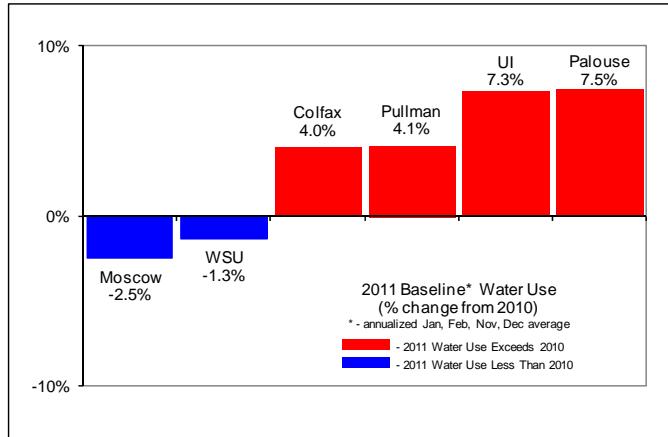
2011 Non-Baseline Water Use



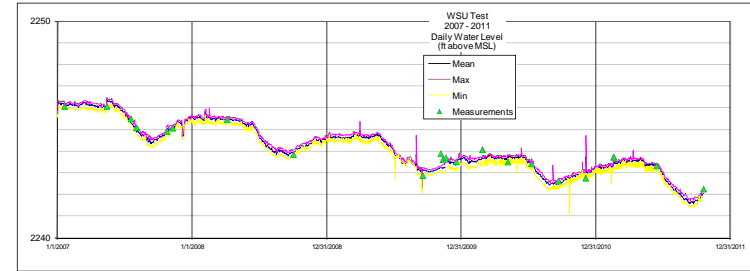
2011 Non-Baseline Water Use Percentage Change From 2010



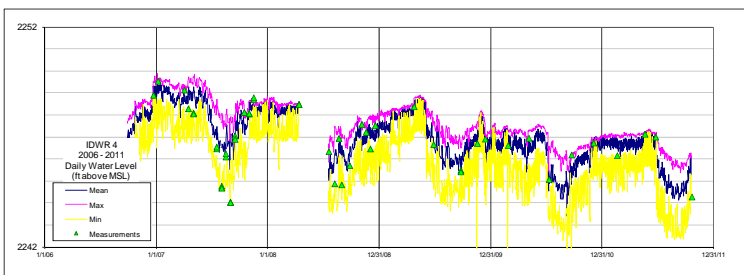
2011 Baseline Water Use Percentage Change From 2010



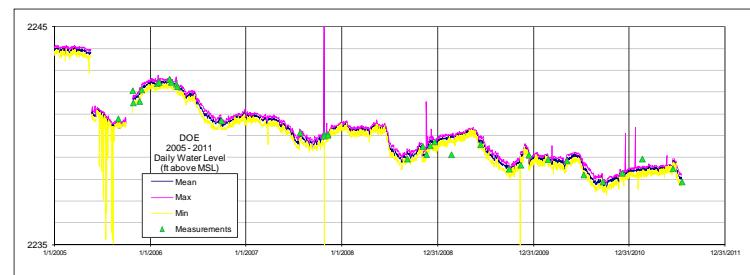
2011 Water Levels – Grande Ronde– WSU Test



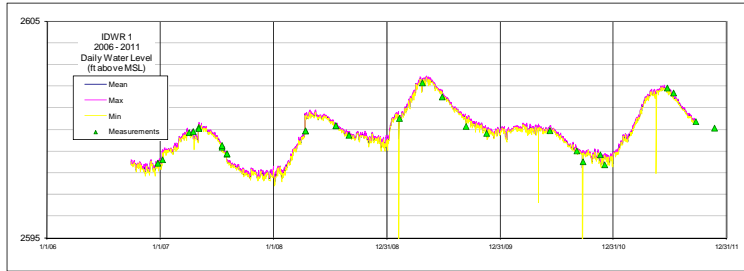
2011 Water Levels – Grande Ronde – IDWR 4



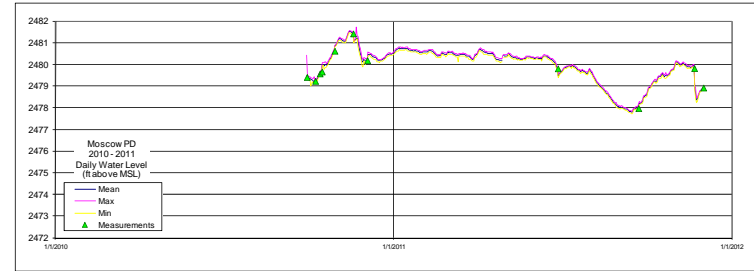
2011 Water Levels – Grande Ronde – DOE Test



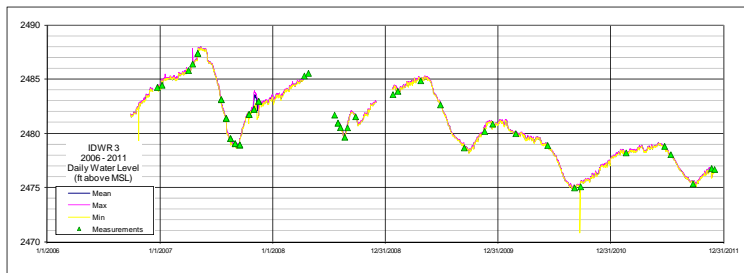
2011 Water Levels – Sediments of Bovill – IDWR 1



2011 Water Levels – Wanapum Basalt– Moscow PD



2011 Water Levels – Vantage Sediments – IDWR 3



2011 PBAC Pumping and Water Levels
 PBAC Meeting
 March 15, 2012